

WestGenTM BULLSEYE

Digital Bullseye articles are available online at www.westgen.com

MAY
2018

WestGen enjoyed its third consecutive year of milestone sales in 2017, clearly demonstrating that it is, and will always be, the key focus business of the WestGen Group of Companies. In fact, both WestGen's financial performance and operating performance in 2017 were significantly above budget.

WestGenTM
Days 2018

To equip our company for the next phase of growth, in 2018 we will be refreshing our Strategic Plan to ensure that we continue to put customers front and centre as we lead the way through today's changing agriculture industry. I believe that strong performance is about making small improvements every day, and it has been this approach that has helped us continue to deliver in line with our strategic goals thus far. Together with our fluid business model, these goals support revenue growth, internal performance improvements, and an overall more cost-efficient organization that is focused on driving sustainable, profitable growth.

Today, we have a keen sense of who we are and what we will do to ensure our business continues to thrive in the future. We've never been more energised by our potential – and that potential is attainable because of the strong foundation we've built. The implementation of our 2015 Strategic Plan focused our attention and resources on performance and growth, and we can see what a difference that focus made. The results of the current strategic plan have been pleasing with all companies exceeding their strategic goals, completing both phase 1 & 2 of our construction and at the same time making impressive gains in both our equity and our cash position.



WestGen 2018/2017 Board of Directors

Back L-R: Ridley Wikkink, Treasurer; Tony Van Garderen, Wim Ruysch; Tony DeGroot; Henry Gisler; Jim Ross, Ben Brandsma, Semex Representative
Front L-R: Chris Parry, CEO; Tim Hofstra; Eric Iversen, President; Matt Plett, Executive Director; Richard Boer, Vice President

The WestGen Group is composed of some of the most dynamic individuals – from its head office employees to the field teams who work the grassroots – led by a talented and experienced Board of Directors & Management team. I would like to express my sincerest gratitude to this well-oiled machine, as our achievements would not have been possible without them. Most of all, I would like to thank our dear members and customers for their support. Rest assured that the company as a whole is resolutely committed to elevating WestGen to a leading position in the industry by way of sound corporate governance, judicious risk management, and a keen sense of social responsibility. As we celebrate another milestone year, let us continue fostering the culture of excellence, collaboration, and innovation in the WestGen Group of Companies.

Behind the company's success is a great team of people, trained with the culture of collaboration.

Chris Parry
Chief Executive Officer, WestGen Group of Companies

WestGen Days saw a great turn out in Abbotsford, BC on March 19-21, 2018. The event started out at WestGen on Monday night at our Wine & Cheese event where Jay Shannon introduced Elevate Genomic Testing. The

AGM started out with a recap from President Eric Iversen and CEO Chris Parry highlighting WestGen's strong performance from 2017. Controller Vernon Smith and Treasurer Richard Boer highlighted positive results.

Another \$185,276.55 was proudly reported by Tim Hofstra to be returned by the WestGen Endowment

Fund to the cattle industry. Contributions totaling \$1,854,609.55 have been returned to the industry since its inception. \$514,873.90 of the Endowment Fund went directly to scholarships and youth development programs.

WestGen and the Board of Directors welcomed Jim Ross, SK and Wim Ruysch, AB to the board. Much thanks and appreciation were given to Art Pruim, SK and Richard Bosma, BC for their hard work and dedication to the board over these last years. We wish you both well in your future endeavors.

We welcomed Guests from the UK via Skype during a presentation from Proventus. The highlight of the afternoon program was a all-female producer

panel including Nelleke Vander Vliet, MB; Amanda Kessel, SK; Crystal Olive, AB; Nicole Tuytel, BC speaking about Farming in a New Era.

Wednesday featured a farm tour to Corners Pride in Chilliwack and and Hoek Holsteins in Agassiz followed by a stop at the Westcoast Classic Sale.

We look forward to hosting our WestGen members in 2019! Stay tuned for the save the date for next year.



Wim Ruysch, Leduc, AB



Jim Ross, Grenfell SK,



IS A2 MILK ABOUT TO GO MAINSTREAM?

There has been lots written recently on the topic of A2 Milk. What more to add then? Well it certainly turned a few heads when the New Zealand-based multi-National, Fonterra, recently announced a new strategic alliance with the A2 Milk Company brand.

One presumes that Fonterra will now begin conversations with its farmers to source A2 milk in New Zealand, to help meet the growing demand for A2 milk products. No doubt, the conversations will already be taking place with processors in Canada too.

A quick review of beta casein genetics first: Beta casein is a protein made up of a chain of 224 amino acids, that is responsible for around 30% of all milk proteins. There are two main versions of beta casein: A1 and A2, and although the A1 version has only one amino acid that is different from the A2 version, the digestion of dairy products from A1 and A2 beta casein proteins does differ. With the two variants A1 and A2, it means that cows can be A1A1, A1A2, or A2A2. Interestingly, and an important distinction from many other single gene traits like coat colour or polled genetics, neither variant dominates over the other. Cows that are A1A2 produce a combination of A1 and A2 beta-casein. When we say cows are "A2", it means that they carry double copies of the A2 variant and thus produce no A1 beta-casein in their milk. A cow that is A1A2 on the other hand has copies of both alleles and has an equal chance of passing on the A1 or A2 variant to her calf. Mating her to a bull that is A2A2, would produce an A2A2 calf 50% of the time and A1A2 the other 50%.

Approximately 35% of Holstein sires are homozygous for the A2 variant, half have an A1A2 genotype while the remaining 16% of sires are homozygous for the A1 variant. Jersey, Brown Swiss and Guernsey breeds all enjoy a higher frequency of the A2A2 genotype but Increasing selection for the A2 allele in the Holstein breed is quickly reducing the gap.

As producers you might think it a long shot that individual farms might gain a premium for guaranteeing provision of 100% A2 milk, or that it would be too difficult to get there, but in the era of genomic testing, it is not difficult to imagine herd owners who have selected for the trait and have 50% A2A2 cows now taking steps to get to 100%.

While the science on the benefits of A2 milk is still not so clear cut, what is clear is that the marketability of the A2 brand is quickly growing. Hence a growing number of producers are not simply giving preference to A2A2 sires, but some are making it an exclusive decision. A2 milk has moved beyond simply being the next thing – Fonterra's alliance will take A2 milk mainstream to a point that A2 milk can no longer be passed off as simply a fad. Ask your WestGen Genetic Advisor for a complete list of your A2 breeding options.

Elevate THE ONLY AUTOMATED HERD STRATEGY TOOL IN THE INDUSTRY



A SEMEX EXCLUSIVE
Includes Immunity+®
genomics to bolster your
herd's disease resistance



Elevate™



NOW WHAT?
Results are automatically fed into
your customized herd strategy
using SemexWorks™ & OptiMate™
for easy decision making



1
SIGN UP WITH
YOUR WESTGEN
REPRESENTATIVE



**NO MORE
SPREADSHEETS!**
Receive official genomic
results on your phone in an
easy-to-read format

**NO MANUAL ENTRY
OF HERD DATA**
Use the herd extractor for
automated upload of data to
the Elevate phone app



2

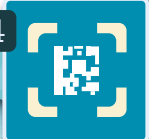
COLLECT YOUR DNA SAMPLES
You will receive ear tissue sampling
units to collect samples from animals
identified in your herd strategy



SHIP SAMPLES
Mail to the lab for testing
in preprinted envelopes

**SCAN SAMPLES
WITH PHONE APP**
Automatically match to
your list of individuals to test

4



3

ELEVATE YOUR GENETICS

- Seamless sample collecting
- Low cost genomic testing
- Test only the animals identified by your genetic plan!
- Make more accurate decisions
- Works with your customized herd strategy tools: SEMEX WORKS™ and OPTIMATE™

UK Tour

Join WestGen in the UK January 13-27, 2019!

Join us for a fabulous 14 day adventure! We intend to visit Scotland, England and Wales with a mix of sightseeing and farms.

Only 40 spaces available! Please let us know if you are interested in joining us in the UK this January.

Pricing and initial itinerary will be available soon.



Swiss Expo
Add onto your trip by
starting at Swiss Expo
January 10-13 at Expo
Beaulieu Lausanne.



With nearly 130
exhibitors, 400 breeders and over 1,000
cows and heifers, The 22nd edition of the
Expo will be marked by youth and innovation.

If you would like to reserve your space and learn more about the UK tour, please call Kristie Baouya at 604.425.1890 or 1.800.563.5603 ext. 220 or email kbaouya@westgen.com for more information. We hope to have you join us!

UNITED KINGDOM



THE GRADUATING CLASS - SPRING 2018

Blondin INTEGRAL RDC - *Sympatico x Shottle* - It's never easy to be the other brother of a #1 daughter proven LPI sire but Blondin Integral and Comestar Lineman both show it can be done with success. By the time Integral started his AI career, his brother Doorman was already siring All-Canadians and was a year away from capturing the LPI crown. Integral's proven debut at #13 position for LPI is a little less illustrious perhaps, however his claim of exceeding Doorman for both LPI and Pro\$ is not too shabby. With double digit ratings for both Udders and Feet & Legs, Integral stamps a nice Type pattern in his leggy, stretchy and stylish offspring. While he is a moderate milk bull, he sires extreme fat deviations and does a very nice job of lowering Somatic Cell Score. Integral is a Red carrier and a Calving Ease sire.



VAL-BISSON SHOTTLE IMELDA
EX-91-6YR-CAN 8*

RH SUPERMAN - *Supersire x Man O Man* - Tracing through four generations of breeding back to Windy-Knoll-View Promise, it is amazing how a great Type family can also become a great production family. Superman combining nearly 200 kg of Fat and protein with over 2000 kg of Milk is an elite production sire. Type numbers are moderate, but he does especially well on key udder traits and for moderate-sized cows his +12 rating for Chest Width really does make one think of Superman! These are strong cows that hold their body condition despite these extraordinary production numbers. If you have a production emergency, call on Superman to save the day.



SUPERMAN daughter group

Lindenright MEGAWATT HCD

- *Enforcer x Bradnick* - A few years ago the

market accepted with some excitement the bull Lindenright Megawatt. He was easily our most popular Genomax sire for several proof rounds due to his interesting pedigree and balanced genetic profile. The discovery of the Cholesterol Deficiency Haplotype and that Megawatt was a carrier ultimately lead to a break in his marketing, however, his early milking daughters prove the genomic predictions are for real. Megawatt sires moderate production numbers combined with an excellent Type profile, especially for Feet & Legs. He also sires a nice Health trait profile with strong Herd Life and Daughter Fertility ratings. Megawatt is a Calving Ease sire. As balanced as ever, this is an easy bull to include in your breeding program on pedigrees Optimate confirms to have low probability of HCD presence.



Dam: LINDENRIGHT BRADNICK MOOVIN ON
VG-87-2YR-CAN 2*

Gen-I-Beq ATTICO-Red - *Sympatico x Baxter* It's always nice to have a well-balanced Proven Red sire in our lineup and Attico-Red fits that bill. Although he just barely misses having 20 daughters past 120 days in Milk to achieve a Canadian-only production evaluation, his 225-daughter MACE evaluation is made up in equal parts of Canadian and US daughters providing a 91% Production reliability rating. Attico-Red delivers a nice shot of milk for red enthusiasts, with over 1000 kg Milk and strong fat and protein deviations. His double-digit Type rating is built on a balanced profile, matching well on many red bloodlines, lengthening teats and lowering pins. Attico, like his sire, scores well for Calving Ability.



Dam: KHW-I AIKA BAXTER
VG-89-5YR-CAN 20*

Walnutlawn SOLOMON - *Doorman x Lavanguard* - The popular Genomax bull Walnutlawn Solomon made his way to the proven sire side of the sheet solely holding the number one Conformation spot with the unfortunate news coming since of his passing. Amazingly, Solomon is currently running at 95% Good Plus & Better on daughter classification with 28% of his 2-yr-old daughters achieving a VG score. By the time this information reaches mailboxes, it is expected that the small inventory of semen we have will be depleted. Fortunately, many producers in western Canada have Solomon calves in their pens as he had been a heavily used sire for several years.

Claynook TONKA - *Doorman x Windbrook x Goldwyn* One might fixate only on the dream sire stack but Tonka hails from an exceptionally well-bred maternal pedigree too with true cow family credentials: 7 VG or EX dams that combine for a total of 42*. Tonka delivers solid Milk and a very enticing Type break down with +13 for Type +11 for Mammary +14 for Dairy Strength and +7 for Rump. He sires a pleasing SCS score of 2.79 combined with 105 for Milking Temperament and an-against-the-odds 99 for Milking Speed. Look to Tonka to make angular cows with very well attached udders while strengthening loins and widening pins. Many producers used Solomon rather than Tonka on expected concerns for Milking Speed from a Doorman x Windbrook mating. Now that this fear has been removed and with Solomon's demise, it is expected that Tonka will get his chances.



Claynook Tonka

Healthy cows lead to Healthy returns

A visit with Lloyd and Daphne Holterman

With two recent speaking engagements in western Canada where on both occasions an unsolicited compliment was paid to Immunity+ technology, we thought it time to find out more about Rosy-Lane Holsteins in Watertown, WI, and specifically the data that prompted the glowing remarks.

The interview with principals Lloyd and Daphne Holterman does not disappoint. Rosy-Lane I'm informed was all about health long before most people talked about selecting for healthier cows. While the US industry was focusing on TPI (jokingly referred to by Lloyd in those days as synonymous with Tall, Pretty and Infertile) as the way to improve longevity, Lloyd Holterman began blazing his own trail and breeding cows that worked for him, keying in on the brand-new genetic trait called Productive Life and shortly thereafter, Daughter Pregnancy Rate (DPR). After all, says Lloyd "you need to select directly for the traits that make cows last" - as opposed to indirectly via type traits. Becoming a NM\$ enthusiast (similar to Pro\$ in Canada), Lloyd's pursuit of profitable cows was based on using his own on-farm data to guide selection decisions. Today, most of the rest of the world has caught up on the philosophy and importance of health traits within a breeding goal. Still, with a big head start, clearly it is immensely satisfying for Lloyd to have AI companies and individual breeders today interested in top-ranked genomic animals from his herd.

It was 1992 when Lloyd first opted for the road less travelled - that proverbial fork in the road. For many years he continued to work within his own breeding program, selecting the types of bulls that worked for him. With bulls like Manfred, Oman, Lynch and Ramos, he blazed his own trail though it increasingly led to disappointment from classification visits where his kind of cows - the kind that worked best at Rosy-Lane - were often not appreciated. The health traits he sought improved steadily however, alongside the diligent management focus that he paired with the selection philosophy. With death losses now typically in the 3% range, culling rate hovering around 20% and somatic cell counts averaging just over 100,000 on his 1,000-cow herd, the 30,000-lb average he generates per cow would rival the most efficient herds anywhere - even in times of low US milk prices - generating a 3-year average of over US\$800 profit/cow/yr. (2014-2016).

A few years ago, Lloyd had occasion to use a highly ranked NM\$ bull from Semex named De Su Nominee who also happened to be an Immunity+ sire. While it was just one bull, Lloyd was curious enough about what he had heard and read about Immunity+ to track results and create his own



real-world data. He was astounded by what he found - and makes a point to include the data on the many speaking engagements he and Daphne take part in. Included is a summary of the info Lloyd provided on the Nominee progeny born between July and Oct 2014.

On the research that lead to the creation of the Immunity+ brand Lloyd is clear: "I think it's going down the right track - I applaud Semex for doing that." Lloyd is also keen to be an early adopter herd for the soon-to-be-released Semex genomic testing service, Elevate, which is slated to include an Immunity prediction.

How will he use it? Lloyd has already adopted a rigorous culling program, eliminating all animals under 700 NM\$ at 2 days of birth. Genomic testing is used on most of those that remain. It means 35% of the calves born at Rosy-Lane are not reared. That's still a foreign concept for most Canadian operations, but for Lloyd, there is no money to be made in rearing heifers he does not need. "I started farming in 1981 and I never thought I'd see the day a heifer calf would be worth less than a bull, but that's the current situation in the US", he laments. Holterman has also begun using a fair bit of beef semen. After all, with a 20% cull rate, he really doesn't have need for the number of replacements he could be producing.

Lloyd and Daphne are big believers that when your values, goals and business plan all overlap, you get the maximum satisfaction out of life. In high demand for speaking engagements in many quarters their farm's tagline says it all: Great People, Great Cows, Great Returns.

Immunity+ RESULTS WITH 0200HO06528 DE-SU NOMINEE

- 30 heifers born, 0 DOAs
- 20 still in herd, 4 sold for Dairy, 6 culled
- 6 culled: 10%/year cull rate
- 0 died
- 1.56 services/conception, compared to 1.8 avg
- 106 Relative value on DC305 (Milk yield)
- From the 20 Nominee daughters, 44 calvings and only 3 DOAs from the 44 calvings
- Zero DA's
- Zero Ketosis
- Zero Milk fever
- Zero RPs
- Zero Mastitis

NEW GENOMAX HIGHLIGHTS

Progenesis OTHELLO - Modesty x Spring

Modesty's highest LPI son, Othello is ready to add value to your breeding programs. Neatly combining big time production (2078 KG Milk, 108 KGS Fat) with appealing conformation (+13) he is especially strong for Mammary Systems (+14). Not lacking in pedigree power, he traces his family line back to the Ammon-Peachey Shauna family. Expect short supply for at least several more months.



Great-Granddam:
SEAGULL BAY MISS AMERICA
VG-87-USA 2*

Westcoast ALCOVE - Duke x MVP

Duke's highest LPI son fits the modern ideal for commercial breeding. Very strong component production (+124 KGS Fat, +0.43%F) with an attractive 106 Daughter Fertility rating predicts hard working cows. Reducing stature, while adding lots of Chest Width, correct Rump Angle and strong udder attachments; this A2A2 sire will fit in many breeding programs.



Granddam: GOLD-N-OAKS ARABELL 1765
VG-88-USA 2*

Westcoast ATHABASKA - Euclid x MVP

Euclid's highest LPI son, Athabaska is a maternal brother to Westcoast Alcové. A Robot Ready™ sire that is extremely

balanced across his proof; He is rated +10 for Mammary System and offers +91Kgs Fat +0.41% Fat all tied together by stellar health traits including 113 for Herd Life.

Progenesis DENMARK - Jedi x Kingboy

A rare combination at over 2100KGS milk and +14 for Mammary Systems this Immunity+® sire does it all. Fitting in to modern breeding programs focused on A2A2 and Robotic Milking systems this Jedi son will propel your herds in the right direction. Expect short supply until early summer.



Granddam: EDG DAHLIA MOGUL 2257
GP-84-2YR-CAN

Villy SILVIO - Abbott x Doorman

Silvio makes his awaited debut as a type superstar. Silvio possesses an extreme, balanced, no-holes type breakdown. While lower on Milk, he offers strong Fat production (+75 KGS) and deviations (+0.62% Fat). Improve your herd with this already popular +17 Conformation A2A2 sire. Silvio is housed in Semex' Europe stud in Hungary. As such, importations will take place once a month and demand is expected to exceed supply in the first few months.

Progenesis WEBSTER-P - Franchise x Delta

One of the highest LPI polled sires available today Webster-P brings the influential sire Delta to the polled population. +1695 KGS Milk and +75 KGS Fat with strong Mammary Systems will help you profitably meet your goals for more polled animals. A Calving Ease sire that transmits A2A2 make him doubly attractive.



Walnutlawn SIDEKICK - Abbott x McCutchen



Dam: WALNUTLAWM MCCUTCHEN SUMMER
EX-92-USA*

Already making a splash in the industry Sidekick only now makes it on to our proof sheet. Offering phenomenal improvements in all the major type traits including +18 for Conformation overall, +17 Fore Attachment, 0 Rear Legs Side View, and +8 Loin Strength. A rating of 102 for Calving Ability should ensure these fancy calves arrive without complications.

Master Breeders

WestGen wants to congratulate these 4 amazing herds from Western Canada on their Master Breeder shields. - Congratulations!!

Alley Holsteins, Saskatchewan



Approximately 30 minutes north west of Saskatoon, Saskatchewan, lies the little town of Dalmeny (pop. 1830), which is home to Alley Holsteins and the Leyenhorst family. Albert, Heather, Logan and Kaetlyn are very excited to be receiving their first Master Breeder Shield from Holstein Canada at this year's National Convention.

"Currently we are milking 160 Holsteins and 1 Jersey and we have around 25 dry cows. Our rolling herd BCA is 291-294-289 and our current herd classification is 30 EX, 115 VG and 50 GP.

We were shocked! We really didn't expect to get it. Being a Master Breeder was always kind of a background goal. We have always tried to breed good cows and give them a place to live that was comfortable and would let them

achieve their maximum potential. So, although it was a goal, it's not the only thing we were striving for.

Our future goals include continuing to breed a profitable herd of Holsteins and to continue to provide them with a healthy comfortable environment, so they can maximize their potential. We also hope to raise and teach the 3rd generation to grow up and love cows and farming as much as we do!"

Printed with permission from Cowsmopolitan

Hyljon Holsteins, Saskatchewan

Hague, Saskatchewan, is located about 45 minutes north east of Saskatoon and is home to the Hylkema family at Hyljon Holsteins. Hyljon is proud to be receiving their second Master Breeder Shield, especially since their big move from British Columbia 3 1/2 years ago.

Hyljon Holsteins began in 1981 when John started with 26 cows on the BC Quota Building program. Both John and Susan had grown up on their family's dairies and were married in 1985. They purchased their own farm in Chilliwack, BC, in 1986. Through the years they have focused on building a quality herd with superior genetics and top production and



they were very happy to receive their first Master Breeder shield in 2002. All eight of their children participated in the 4-H program and several of them also participated in the Western Canadian Classic with tremendous success. With several of the kids keenly interested in dairy farming, John and Susan decided to move to Saskatchewan to expand their operation. Today they milk over 600 cows in a freestall barn.

"We didn't think we had a chance for a second shield after dispersing our herd in 2014! We felt the dispersal was kind of the end of that kind of excitement for us. We didn't take very many cows with us, it would have been harder to move them all, and the ones that did come didn't perform super well. We've maintained our goals of breeding strong and balanced cows and so hearing that we'd be receiving another shield was an unbelievable feeling! This one is almost more satisfying because the whole family has been a part of this one and we are all planning to go to Quebec together! The support from the Saskatchewan Holstein community has been amazing and it seems like many of them will be heading to Quebec with us!

Our future plans include the next generation taking over - we are currently succession planning. Expansion is on-going, our newest barn is almost complete, and we will then have room for 850 cows. Our sons are already planning where to put a new parlour, but they'll have to wait until the new barn is paid off first! We plan to continue what we've always done: breeding balanced cows and enjoy the industry we love."

Printed with permission from Cowsmopolitan

Pennview Farm, Manitoba

Located approximately 45 minutes Southeast of Winnipeg, Manitoba, is the small community of Blumenort. Right on the outskirts of town is a striking red barn which is owned by Larry and Eleanor Penner, and is the previous home of the Pennview herd. Larry and Eleanor are very proud to be receiving their second Master Breeder shield this year.

"We dispersed our herd in 2011 because I was getting older and the girls were not genuinely interested in dairy farming. We probably would have sold out sooner, but we had a great herdsman, Stuart Reimer, who we really enjoyed working with, so he and I carried on side by side a bit longer than expected. We also sold because we felt we'd achieved many of our dairy farming goals, which were: breeding an Excellent cow, selling a bull to AI, marketing embryos and obtaining a Master Breeder Shield. In our dairying career we bred many Excellent cows, sold several bulls to AI, sold embryos to 26 countries and earned our first shield in 2001. We'd never even dreamed of getting Master Breeder shield until we received our first one!



Master Breeders

It was very exciting to get the phone call from Holstein Canada about receiving this shield! The experience has been very different then when we got our first shield. At that time AI companies were starting to buy more and more bulls and the embryo market was very good for us. Then our main goal was to get better and better, so receiving our first shield was a major accomplishment towards that goal. This time it is still good and exciting, but it's just a bit different because we don't work and breathe cows every day!"

Printed with permission from Cowsmopolitan

Zimmer Holsteins, Alberta

It's been a meteoric rise for Zimmer Holsteins which first purchased registered cattle in 1998 and 20 years later is a Master Breeder. The fourth generation Daysland Alberta farm is owned by Bob and Pat Zimmer along with their sons and families, Duane, Vicky, Josh and Noah Zimmer and Brad, Shauna, Damon and Carson Zimmer. The Zimmers milk about 45 cows in a robot barn built in 2016 and farm 3,800 acres of cropland consisting of mainly canola, wheat and peas.



Duane, who is primarily responsible for the dairy, purchased "some better cows in 2001 at the Sunnyslodge dispersal." A foundation cow to come out of that purchase was Sunnyslodge Jennifer, *"put them on the marketing map."*

Zimmer Holsteins also shows at the Royal Agricultural Winter Fair and was involved in the purchase of Smithden Bolton Alexandria. Duane says the *"purchase of Alexandria and the fact that genomics have levelled the playing field for index cows has fueled our interest in index and genomics."*

Today Zimmer Holsteins' goal is to have outstanding *"High numbered individuals from great cow families."*

Printed with permission from Western Dairy Farmer

Did you know?

At Boviteq West we offer Conventional Flushing Services for beef and dairy cattle.



We do **MORE** than just IVF!

Our services include:

- Round the Clock Care
- A focus on Cow Comfort
- Precise Protocols
- Access to our Highly Trained Veterinary Teams
- Professional Service
- Attention to your Genetic Plan

Your future starts now.

Call us to start your program today!

1.800.657.5613



1625 Angus Campbell Rd.
Abbotsford, BC, V3G 2G4
1.800.657.5613
FAX: 604.425.1876

www.boviteqwest.com



BoviteqWest

VERY GOOD FIRST LACTATION

MORSAN DOORMAN MISSY 3362 VG-88
WESTCOAST HOLSTEINS, BC
QUEBEQUA HOLSTEINS, BC

CRESTOMERE GOLDWYN VIRGINIA VG-87
CRESTOMERE BYWAY CASINO VG-86
CRESTOMERE DURBIN LIMBO VG-86
CRESTOMERE HOLSTEINS, AB

DETIMDALE DENHEM FEVER VG-87
CACHE RILEY WICKHAM VG-86
DETIMDALE CONNECTICUT CONTRAST VG-85
DETIMDALE DAKARAI BRAWLER VG-85
HIGHCREST SUPER DIVINE VG-85
TIM HOFSTRA, AB

FAVOUR RUTH IMPRESSION VG-87
WENDON GOLDWYN DANA VG-86
WENDON SOLOMON DIET VG-86
WENDON ZIM UNIX MYSTEE VG-85
WENDON HOLSTEINS, AB

HAMMING SOLOMON CLAIRA VG-87
HAMMING DOORMAN CLAIR VG-86
HAMMING DOORMAN CLAIRA VG-86
BALGONIE DOORMAN JAKKI VG-85
HAMMING SID SHEYONNE VG-85
HAMMING SOLOMON CLAIRE VG-85
HAMMING HOLSTEINS LTD., BC

LAKEFIELD GOLDEN STACEY VG-87
BUTTE HOLSTEINS, AB
LAKEFIELD FARM, MB
RIETVELD DAIRIES LTD., AB

LAREST DOORMAN CHAYENNE VG-87
LAREST CONTRAST ELIYA VG-86
SOUTHVIEW DAIRY, MB

ROSWITHA AUTUMN LANE DM HAILEY VG-87
ROSWITHA AUTUMN LANE DM HOLLY VG-86
AUTUMN LANE HOLSTEINS, BC
ROSWITHA HOLSTEINS, MB

SCOTHAVEN WINDBROOK OREO VG-87
SCOTT DAVID HASTIE, AB

SKYCREST WINDBROOK SMOKIN HOT VG-87
WILLSWICK OCTANE DAISY VG-87
WILLSWICK DOORMAN DIVA VG-86
HAYWAY DOORMAN ALASKA ET VG-85
NICREST HIGH OCTANE HADLEY VG-85
WILLSWICK DOORMAN DEE VG-85
WILLSWICK DOORMAN JOYFUL VG-85
J. WILLIAM WIKKERINK FARMS LTD., BC

WEDGWOOD DOORMAN DIAMOND VG-87
MARVIN & CAROL VAN MERSBERGEN, WA
STANHOPE-WEDGWOOD, BC

WEDGWOOD HI O HOPE VG-87
STANHOPE-WEDGWOOD, BC

AROLNE GOLDWYN LADYSMITH VG-86
CONTINENTAL DOORMAN MAZEE VG-86
WALKERBRAE HIGH OCTANE BLAINE VG-86
DELCREEK GOLDWYN LETSGO VG-85
MORALTA SID REMILLA VG-85
SUNNY MAPLE CAREYPRICE THEY VG-85
MORINVILLE HUTTERITE COLONY, AB

BLONDIN GOLDWYN HARRIET VG-86
SUNNY VALE FARM LTD., BC
T & L CATTLE LTD., BC

BLOSSOMDAIRY DOORMAN RAVISHING VG-86
BLOSSOMDAIRY OCTANE BLESSING VG-86
BLOSSOMDAIRY DOORMAN RULYJULE VG-85
BLOSSOMDAIRY OCTANE ROCKET VG-85
BLOSSOM DAIRY LTD., BC

ELMBRIDGE DOORMAN SHES A LYNX VG-86
ELMBRIDGE DOORMAN ROLEX VG-85
ELMBRIDGE HIGH OCTANE POETRY VG-85
NICOLE PARKINSON, BC
PETER TUYTEL, JR, BC

FAVOUR IDELEN DOORMAN VG-86
FAVOUR HOLSTEINS, AB

LINDRIAN S P DALLIE VG-86
JOHN TAMIS, BC

MARTIANN SID POLLY 331 VG-86
MARTIANN IMPRESSION DIAMOND VG-85
MARTIANN WICKHAM QUEEN 337 VG-85
MARTIANN HOLSTEINS LTD., BC

MORSAN DOORMAN MISSY 3725 VG-86
WESTCOAST DOORMAN CASH 3444 VG-86
MORSAN DOORMAN MISSY 3381 VG-85
WESTCOAST BYWAY CAMARO VG-85
WESTCOAST DOORS CHAY1526 3564 VG-85
WESTCOAST DOORS SARA936 3576 VG-85
WESTCOAST GOLDWYN CLOVER VG-85
WESTCOAST HOLSTEINS, BC

MOSNANG HIGH OCTANE WIRED VG-86
MOSNANG HIGH OCTANE ROCKET VG-85
MOSNANG HOLSTEINS LTD., AB

NATURE GLEN ENVOIOUS KAITLYN VG-86
NATURE GLEN DAIRY, BC

TWINAIRVIEW SNOWY BIRDSEED VG-86
TWINAIRVIEW HOLSTEINS LTD., MB

WISSELVIEW DOORSOPEN DIXIE VG-86
WISSELVIEW LINEMAN CHENAY VG-85
WISSELVIEW WICKHAM DAHLIA VG-85
WISSELVIEW WICKHAM MOONLIGHT VG-85
WISSELVIEW FARMS, BC

AGGIES SUPERMAN GINA VG-85
HERMANN HUEGING, MB

ALPINA FIX CASSIDY VG-85
ALPINA DAIRY FARM LTD., BC
KRISTIN DAHL, BC

ALPINA SUPERPOWER VICKI VG-85
ALPINA DAIRY FARM LTD., BC

ALTAPPEL DOORMAN ALIVIA VG-85
ALTAPPEL FEVER TAMARA VG-85
SPRUCE LANE DAIRIES LTD., AB

BEILEN JUBILEUM 1206 VG-85
GEZINUS MARTENS, AB

BENTEMBER CHERRY JETT AIR VG-85
SEPTEMBER DAIRY LTD., AB

BENTHEMMER CHELIOS CATALINA VG-85
BENTHEMMER FIX ARIANNA VG-85
BENTHEMMER FIX REMEDY VG-85
BENTHEMMER FIX RENATA VG-85
BENTHEMMER LOVERMAN AMINA VG-85
BENTHEM DAIRY LTD., AB

BOSDALE SOLOMON D ELSIE VG-85
OSTARA HOLSTEINS, AB

BRADNER-R DOORMAN WILLEMINA VG-85
BRADNER R FARMS, BC

BRINKLAND DOORMAN FULL MOON VG-85
BRINKLAND DAIRY LTD., BC

BRUMMELHUIS CONTRAST ALNORA VG-85
TEN BRUMMELHUIS DAIRY, AB

BUITEFULL FIX TABDY VG-85
BUI DAIRIES LTD., AB

CHUBANNA AIRINTAKE ETTA VG-85
CHUBANNA TONKA DAWN VG-85
CHUBANNA HOLSTEINS LTD., AB

CORLANE LIBERIA SCARLET VG-85
CORLANE HOLSTEINS LTD., AB

COULEEVIEW LINEMAN 1084 VG-85
COULEE VIEW FARMS, AB

DAHLIA SUPERPOWER ZAZA VG-85
KRISTIN DAHL, BC

DANE'SPRIDE ELUDE 1034 VG-85
DANE'S PRIDE DAIRY, AB

DELGREN LEMUST CUPCAKE VG-85
DELORME FARMS LTD., MB

DFL DOORMAN 333 VG-85
KISH FARMS LTD., BC

EARNEWALD 788 FIX 969 VG-85
EARNEWALD HOLSTEINS, AB

ELMIDO DAHLIA KRUSADER 2625 VG-85
ELMIDO FARMS, BC

FRIECREST PULSAR HILDIE VG-85
ED & KATHY FRIESEN, MB

FRUEH CAPITAL TIGER VG-85
FREUH FARMS LTD., BC

GLORYBOUND BUBBLES DOORMAN VG-85
GLORYBOUND HOLSTEINS, BC

GOLDENSET GRACIE ALONZO VG-85
GOLDENSET SNOWY DELOVELY VG-85
GOLDENSET SNOWY VIBE VG-85
CHRIS DEWITT JR, BC

GRIMSBY SALOON PRICE VG-85
ANDREW & LINDA DRIEDGER, MB

HAMMINGVIEW ALONZO MINUET VG-85
HAMMINGVIEW ONEDIRECTION MERRY VG-85
HAMMINGVIEW FARMS LTD., BC

JAMADO DOORMAN STANDBY VG-85
DEN OUDSTEN DAIRY LTD., AB

KELTON SUPERPOWER ROSETTA VG-85
KELTON HOLSTEINS LTD., BC

KENMARANK SHADOW ESSIE VG-85
KENMARANK SOLOMON CRUNCH VG-85
KENMARANK WICKHAM WATERMELON VG-85
KENMARANK FARMS LTD., BC

KNEEHILL CHELIOS HELEN VG-85
KNEEHILL FEVER SUSAN VG-85
KNEEHILL GOLDN WINDBROOK SONJA VG-85
PHILIPSEN DAIRIES LTD., AB

KOA SUPERPOWER 1510 VG-85
TEKOA DAIRY INC., BC

LACROIX JUBILEUM ALEEA VG-85
HANDHILLS COLONY, AB

LUCKY DOORMAN KITKAT VG-85
KEVIN VANZESSEN, SK

LUCKY HILL DAIRY LTD., AB
VANZESSEN DAIRY INC., SK

LUCKY OCTANE LOVE AT FIRST VG-85
LUCKY HILL DAIRY LTD., AB

LYBA SUPERPOWER MARGE VG-85
SHADOW RIDGE DAIRY, BC

MALARKY DUDE MORAE VG-85
MALARKY TALENT TIZITA VG-85
MALARKY HOLSTEINS, MB

MAYPOINT WICKHAM EMBER VG-85
MASON FARMS LTD., MB

MEADOW GREEN DOORMAN PEACHIE VG-85
MEADOW GREEN ENVOIOUS WYLIE VG-85
MEADOW GREEN RAPTOWN GINGA VG-85
MEADOW GREEN SOLOMON GRETTA VG-85
MEADOW GREEN FARMS LTD., BC

MELINKE DIESEL WINTER VG-85
MELINKE FARMS LTD., BC

MELLOWDALE BRAWLER 5054 VG-85
MELLOWDALE FEVER DESTINY VG-85
MELLOWDALE HIGH OCTANE 6030 VG-85
MELLOWDALE DAIRY, AB

ND SEAVER RUBY 550 VG-85
NORTHDALE DAIRY FARMS LTD., AB

NOVUM CARMEN HIGH OCTANE VG-85
NOVUM DIANE SUPERSONIC VG-85
ENTREPRISES LAVOIE (1999) INC., AB

PEMBINA IMPRESSION CARMEN VG-85
PEMBINA COLONY FARMS, MB

PENNLANE BREKEM FINAL VG-85
C. & D. PENNER FARMS LTD., MB

POL BUTTE OCTANE CORDELIA P VG-85
VAN DEN POL DAIRY, AB

PRINSE MEGAWATT CLAIRE VG-85
PRINSE FARMS LTD., BC

RAYA DURBIN KURLIN VG-85
RAYA HOLSTEINS, MB

RIVERS EDGE LINEMAN 1598 VG-85
RIVERS EDGE SUPERONIC 1652 VG-85
M & L FARMS LTD., BC

QUINTUS SUPERPOWER FERN 610 VG-85
QUINTUS DAIRY LTD., AB

RIETBEN GOLDWYN CHRISTA VG-85
MORCREST FARMS LTD., AB

RIETBEN S CIARA VG-85
RIETVELD DAIRIES LTD., AB

RIETBEN S CONSTANCE VG-85
BUTTE HOLSTEINS, AB
RIETVELD DAIRIES LTD., AB

ROEMERS DOORMAN CREAM VG-85
ROEMER FARMS LTD., BC

ROLLEYVIEW SUPERPOWER TONI VG-85
ROLLEYVIEW FARMS, BC

ROSWITHA IMPRESSION 2032 VG-85
ROSWITHA SAVIOR WHISPER VG-85
ROSWITHA HOLSTEINS LTD., MB

RUMARDALE WICKHAM CABELL VG-85
RUMARDALE HOLSTEINS, MB

SCHERMERS 1227 VG-85
SCHERMERS DAIRY FARMS LTD., AB

SEVENP BRAWLER ELLY VG-85
7P DAIRY FARM, AB

SHADYNOOK MEGAWATT MARIANA VG-85
SHADYNOOK FARMS LTD., BC

SHANALTA RAPTOWN EASTER JADE VG-85
STRAUB & SON DAIRY, AB

SILVERMAPLE SAMMY JOE VG-85
BEN & SUZANNE CUTHBERT, BC

SKYCREST GOLDENSET FIRECRACKER VG-85
DARRIN RASMUSON, AB

SOLIDROCK FEVER 342 VG-85
SOLID ROCK FARM LTD., AB

SPRINGBEND PULSAR SENSATION VG-85
SPRINGBEND FARMS, BC

SPRINGBUTTE FEVER PATRICIA VG-85
HENRY SLOMP, AB

STARCREST DURBIN DELAINEY D VG-85
JAMES & KIRSTY MCAVOY, BC

STREAMLINE JETTAIR POLLY 1040 VG-85
STREAMLINE KRUSADER BRENDA VG-85
MARTIN & JENNIFER HAMMING, MB

SUMMERSHADE MOLLASONIC VG-85
SUMMERSHADE FARMS LTD., BC

SUNNINGHILL WINDBROOK BRIANNA VG-85
SUNNINGHILL HOLSTEINS, BC

SUNNYHOME SNOWY RETA VG-85
SUNNYHOME WICKHAM MULBERRY VG-85
SUNNYHOME FARMS LTD., BC

SUNSAR BREKEM SWING VG-85
SUNSAR DAIRY, AB

SWEETRIDGE CINDERDOOR RHEBA VG-85
SWEETRIDGE DOORMAN RAFINA VG-85
HAROLD & MIRIAM SWEETNAM, MB

TAPPENVALE DOORMAN SAPPHIRE VG-85
TAPPENVALE FARM LTD., BC

T N T CHELIOS ERASE VG-85
TREVOR & TRUDY BALLARD, AB

TEEKAFIRS SAMMY 359 VG-85
TEEKAFIRS FARMS LTD., AB

TWINAIRVIEW ELUDE BANJO VG-85
TWINAIRVIEW SNOWY JANOVA VG-85
TWINAIRVIEW SOLOMON JENEVA VG-85
TWINPARK IMPRESSION CHARA VG-85
TWINAIRVIEW HOLSTEINS LTD., MB

VANDEL REGINALD REY VG-85
LAWRENCE & BONNIE VAN DEN BOSSCHE, MB

VANVALLEY FEVER SCARLETTE VG-85
VANVALLEY FARM LTD., BC

VEDDERLEA DOORMAN LAINEY VG-85
VEDDERLEA FARM LTD., BC

VERMILION MANIFOLD DARIAN VG-85
LAKELAND COLLEGE, AB

WEDGWOOD DOORMAN DEMIE VG-85
WEDGWOOD HOLSTEINS, BC

WIKKVIEW WICKHAM GAMANDA VG-85
WIKKVIEW WICKHAM JAWA VG-85
WIKKVIEW FARM LTD., BC

WOUTERS KRUSADER ESMIRA VG-85
WOUTERS PULSAR WOOLA VG-85
WOUTERS DAIRY, AB

ZIMMER LIONEL BAZINGA VG-85
DUANE G. ZIMMER, AB

ZIMMER HIGH OCTANE CHICKY VG-85
ROSE GATE DAIRY FARMS LTD., BC

FIRST TIME EXCELLENT

MIL-EN-ROY WINDBROOK GRACELET EX-93
MIL-EN-ROY WINDBROOK GLORINETTE EX-91
MIL-EN-ROY WINDBROOK EVA EX-90
MIL-EN-ROY WINDBROOK NATASHA EX-90
MIL-EN-ROY FARMS (1981) LTD., SK

MOSNANG SALOON LIQUOR EX-93
MOSNANG DUDE LILAH EX-91
MOSNANG HOLSTEINS LTD., AB

RIETBEN SC CAROLINA EX-93
RIETVELD DAIRIES LTD., AB

WENDON FEVER MIRABEL EX-93
WENDON HOLSTEINS, AB

CRESTOMERE DUDE DYNAMITE EX-92
CRESTOMERE HOLSTEINS, AB

RUMARDALE DUDE RAYNA EX-92
RUMARDALE HOLSTEINS, MB

SUNNYMERE FEVER LILY 690 EX-92
CEDARWAL DOORMAN ECHO EX-90
MORSAN UNO D MISSY 1579 EX-90
WESTCOAST HOLSTEINS, BC

THORNSPYC LAUTHORITY NIKITA EX-92
THORNSPYC DAIRY - VAN DE BRAKE FAMILY, AB

WENDON GOLDWYN RAINA EX-92
BERNALTA SID SKITTLES EX-91
MARKWELL-I GOLDWYN FINE EX-90
WENDON HOLSTEINS, AB

AUTUMN LANE STANLEY CUP STAR EX-91
AUTUMN LANE HOLSTEINS, BC

BORNHAVEN MILLAY FEVER EX-91
VILLAGE RANCH LTD., BC

CONTINENTAL FEVER DUCHESS EX-91
CONTINENTAL HOLSTEINS, AB

COULEEVIEW BRAWLER 926 EX-91
COULEE VIEW FARMS, AB

HAMMING JASPER SHAYA EX-91
HAMMING HOLSTEINS LTD., BC

HIDDENLUCK LAVAMAN KITTEN EX-91
VANJAARSVELD HOLDINGS LTD., BC

HOAS LAWFUL 926 EX-91
HOAS FARMS LTD., MB

LINDRIAN LAVANDIA EX-91
LINDRIAN STEADY HEART EX-90
JOHN TAMIS, BC

MARSFIELD DUDE SAMMY JO EX-91
MARSFIELD CHARDONN LHEA EX-90
GERT & SONJA SCHRYVER, AB

MARTIANN STEADY KELLY 101 EX-91
MARTIANN WINDBROOK PAULA 162 EX-91
TOLAMIKA WINDBROOK FANCY PANTS EX-91
MARTIANN GOLDWYN SECRET 59 EX-90
MARTIANN HOLSTEINS LTD., BC

MEADOW GREEN LAUTHOR EVENING EX-91
SPRINGBEND LAUTHORITY SALACIA EX-90
MEADOW GREEN FARMS LTD., BC

PENDENE LAUTHORITY MISSIE EX-91
WILLSWIKK SID DAISYANNA EX-91
WILLSWIKK WINDBROOK JAXEN EX-91
WILLSWIKK JASPER DIVINITY EX-90
WILLSWIKK WINDBROOK DIXIE EX-90
J. WILLIAM WIKKERINK FARMS LTD., BC

RIETBEN LIS ROYALE EX-91
KOOY FINAL CUT 493 EX-90
NIFERA HOLSTEINS, AB

ROBELLA BELLA S BOUNTY EX-91
ROBELLA WINDBROOK ACURA EX-91
ROBELLA WINDHAMMER KINCADE EX-90
ROBELLA HOLSTEINS, SK

ROCKYCREST SAMMY GRACIOU EX-91
ROCKYCREST HOLSTEINS LTD., BC

SAANWOOD SC ROSSIE EX-91
VIEWFIELD FARMS LTD., BC

WEDGWOOD MERIDIAN DELCIE EX-91
MARVIN VAN MERSBERGEN, WA

STANHOPE-WEDGWOOD, BC

BENCO HILTON WINDBROOK EX-90
BENCO STARWARS FEVER EX-90
BENCO HOLSTEINS, BC

BENTHEMMER SEAVER JOYCE EX-90
BENTHEMMER STEADY ANGELA EX-90
BENTHEM DAIRY LTD., AB

BLOSSOMDAIRY KRUSADER LOLLIPOP EX-90
BLOSSOMDAIRY SID REJOICE EX-90
BLOSSOM DAIRY LTD., BC

BOFRAN GOLDWYN ROSANY EX-90
SUNNY VALE FARM LTD., BC

BRADNER SEAVER ANASTASIA EX-90
GOLDEN GATE FARMS LTD., BC

BRUMMELHUIS TALENT RABBER EX-90
HAPPY COW DAIRY, AB

BUTTE JORDAN MABEL 1658 EX-90
MARYLANDER HOLSTEINS, AB

CEDARWAL WINDBROOK IMAGE EX-90
CEDARWAL FARMS LTD., BC

CLEARSKY GOLDWYN 1729 EX-90
HOUWELING FARMS LTD., AB

COLBRIT LAWMAN PRETZEL EX-90
COLBRIT HOLSTEINS, BC

CONTINENTAL WINDBROOK DINA EX-90
ROBELLA REGINALD JUNGLE JUICE EX-90
CONTINENTAL HOLSTEINS, AB

CORLANE STEADY TWIZEL EX-90
CORLANE HOLSTEINS LTD., AB

COYTEE WINDBROOK BABOO EX-90
RIETVELD DAIRIES LTD., AB

TOM HOFSTRA, AB

COZY PRAIRIE JETT AIR MILEY EX-90
COZY PRARIE, BC

DARCOR STALLION JINX EX-90
DARRIN RASMUSON, AB

DECOY STEADY FLASH EX-90
VAN DER KOOIJ DAIRY, AB

DELGREN STEADY LOCUSS EX-90
DELORME FARMS LTD., MB

DIAMONDPARK WINBROOK FAVRIT EX-90
DIAMOND PARK DAIRY LTD., AB

DOCKUM BRENDA LAVAMAN 232 EX-90
DOCKUM HOLSTEIN FARMS LTD., BC

DRESLER LIBBY STANLEY CUP EX-90
TONY DRIESSEN, BC

DYKSTER STEADY FATIMA EX-90
MIKE & ANNE VAN DIJK, AB

ELMBRIDGE REGINALD GUCCI EX-90
NICOLE PARKINSON, BC

PETER TUYTEL, JR, BC

FAVOUR MYRA STEADY EX-90
FAVOUR HOLSTEINS, AB

FRIECREST LUMI IVORY EX-90
ED & KATHY FRIESEN, MB

GOLDENSET GEENA EX-90
CHRIS DEWITT JR, BC

HAMBERLIN SUPER AUTHOR EX-90
HAMBERLIN HOLSTEINS LTD., BC

HJAY LAUTHORITY PATTI EX-90
H JAY ACRES, AB

HYLJON FEVER SABELLE EX-90
HYLJON MERIDIAN 1035 EX-90
HYLJON TOPSIDE JOYCE EX-90
JOHN E. HYLKEMA, SK

KELTON GOLDWYN ROSEY 179 EX-90
KELTON HOLSTEINS LTD., BC

KENSON CINDEE MR BURNS EX-90
KENSON HOLSTEINS LTD., MB
KESSEL STANLEY CUP KINDER EX-90
KESSEL FAMILY FARM, SK

LAKEWAY TALENT TIMOLA EX-90
BOOM HOLSTIENS LTD., AB

LUCKY BUD LIGHT TYPPPO EX-90
LUCKY HILL DAIRY LTD., AB

LYBA BRAWLER TARYN EX-90
SHADOW RIDGE DAIRY, BC

ND SMURF DEBRA 343 EX-90

NORTHDALE DAIRY FARMS LTD., AB

RAYA LAUTHORITY JELLYFISH EX-90
RAYA TALENT FAMILIE EX-90
RAYA HOLSTEINS, MB

ROBELLA FEVER PAIGE EX-90
BALGONIE HOLSTEINS LTD., SK

ROBELLA HOLSTEINS, SK

ROBELLA LAMPADA TALENT SIZZLIN EX-90
FRED FORNWALD & SONS FARMS LTD., SK

ROBELLA HOLSTEINS, SK

ROCKLEDGE SABRINA FEVER EX-90
ROCKLEDGE FARMS LTD., BC

ROCKYMOUNTAIN GOLDWYN FERGIE EX-90
SYTSM DAIRY FARMS LTD., BC

SAANWOOD LAUTH COUNTESS EX-90
SAANWOOD LAVENGUARD JARA EX-90
VIEWFIELD FARMS LTD., BC

SEAROCK BALTIMORE DENISE EX-90
OENE STEEGSTRA, AB

SPRINGBEND SEAVER JADENE EX-90
ELKVIEW FARMS LTD., BC

STARCREST LAMPADA LA EXCLUSIVE EX-90
JAMES & KIRSTY MCAVOY, BC

SUNNYHOME FEVER GINIA EX-90
SUNNYHOME FARMS LTD., BC

SUPLESSE SHADOW TRIX EX-90
MICHAEL HAAMBUCKERS, BC

SWEETRIDGE WINDBROOK TAPDANCE EX-90
HAROLD & MIRIAM SWEETNAM, MB

TAPPENVALE LAUTHORITY APPLE EX-90
TAPPENVALE FARM LTD., BC

TREJEY SHADOW 281 EX-90
LAKESIDE DAIRY LTD., AB

TWOMEIER SAMUELO TONI 283 EX-90
U & D MEIER DAIRY #2 LTD., BC

UBYSSEY JETT AIR SALIA 3153 EX-90
UBC DAIRY EDUCATION & RESEARCH CENTRE, BC

VANVALLEY SEAVER SALLY EX-90
VANVALLEY FARM LTD., BC

VEDDERLEA FEVER LYRIC EX-90
VEDDERLEA FARM LTD., BC

VERMILION LAUTHORITY ADRIANA EX-90
LAKELAND COLLEGE, AB

WISSELVIEW UNO DELIGHT EX-90
WISSELVIEW FARMS, BC

ZIMMER WINDBROOK ALLEGRA EX-90
DUANE G. ZIMMER, AB

HOLSTEIN PRODUCTION

BREEVLIET MANIFOLD 2521
BCAS: 312 343 337
BREEVLIET LTD., AB

DECOY HOWIE CHEEKACHEEKA
BCAS: 305 342 296
VAN DER KOOIJ DAIRY, AB

EDUCATE-A-KID RISINGSTAR SAMBA
BCAS: 301 325 318
EAGLE ACRES DAIRY CENTRE, BC

ELKREST STEADY 2916
BCAS: 300 335 310
ELKREST FARMS LTD., SK

HUYSSOON 798 LAVAMAN 453
BCAS: 318 308 333
HUYSSOON DAIRY, AB

LUCKY WINDBROOK VANILLA
BCAS: 315 405 329
LUCKY HILL DAIRY LTD., AB

MARSFIELD FEVER JAYDEN
BCAS: 358 367 351
MARSFIELD FEVER SALLY 2004
BCAS: 317 378 326
MARSFIELD FEVER TESSA
BCAS: 388 378 346
MARSFIELD WINDBROOK SAM 1815
BCAS: 329 354 341
GERT & SONJA SCHRYVER, AB

WISSELVIEW LAUTHORITY BERLINE
BCAS: 334 342 321
WISSELVIEW FARMS, BC

LONGTIME PRODUCTION

LUCKY TITANIC HEIDE
150,979 KGS 3.5%F 2.9%P
LUCKY HILL DAIRY LTD., AB

WEDGWOOD OUTSIDE REVA
145,617 KGS 3.5%F 3.0%P
WEDGWOOD HOLSTEINS, BC

MAGEO TITANIC RUANI
130,800 KGS 3.5%F 3.2%P
MAGEO POUTEAU FARM, MB

TENHOVE SEPTEMBER SANDRA
121,358 KGS 4.4%F 3.3%P
ASPENRIDGE FARMS LTD., AB

Winner's Circle

MARSFIELD GOLDWYN CANDY

115,959 KGS 4.0%F 3.1%P

MARSFIELD MAGOT ROSE

103,480 KGS 3.6%F 2.9%P

GERT & SONJA SCHRYVER, AB

WEDGWOOD ADELAIDE GOLDWYN

113,383 KGS 4.2%F 3.3%P

STANHOPE-WEDWOOD, BC

ATSON SAKU 1272

111,678 KGS 3.9%F 3.2%P

ATSON FARMS LTD., BC

KLEINVALLEY TITANIC TANYA

110,961 KGS 3.8%F 3.4%P

KLEINVALLEY FARMS, BC

HUYBREGTS ALLEN YVONNE

109,769 KGS 3.8%F 3.3%P

J. HUYBREGTS, AB

BENNER GOLDWYN JAMARCO

104,145 KGS 4.4%F 3.5%P

BENNER HOLSTEINS LTD., MB

BALGONIE GOLDWYN RAVISH

101,849 KGS 3.9%F 3.3%P

BALGONIE HOLSTEINS LTD., SK

PDF GOLDWYN HIGHLIGHT

101,362 KGS 4.3%F 3.5%P

BROYHILL HOLSTEINS, SK

WHITEGROVE TRIOMPHE SUCCESS

101,132 KGS 3.5%F 3.0%P

WHITEGROVE FARMS LTD., BC

LAMPADA GOLDWYN KATRINA

100,770 KGS 3.5%F 3.0%P

FRED FORNWALD & SONS FARMS LTD., SK

BENTHEMMER GOLDWYN AMELIE

100,588 KGS 3.8%F 3.0%P

BENTHEM DAIRY LTD., AB

MARTIANN SPRITE BANGO 1060

100,519 KGS 3.1%F 2.9%P

MARTIANN HOLSTEINS LTD., BC

4 STAR BROOD COWS

ALLEY JAKOB BELLA EX-91 4*

ALLEY HOLSTEINS, SK

BERGEROY TAFFY LYSER EX-93 4*

MORSAN FARMS LTD., AB

LAKEFIELD OUTSIDE SALLY VG-88 4*

AUTUMN LANE HOLSTEINS, BC

LAVENDER MR BURNS ROBELLA VG-86 4*

LAVENDER FARMS LTD., BC

MEADOW GREEN OUTSIDE CORRINE VG-85 4*

MEADOW GREEN FARMS LTD., BC

PDF GOLDWYN HIGHBALL EX-94 4*

FRED FORNWALD & SONS FARMS LTD., SK

ROBELLA HOLSTEINS, SK

A sincere congratulations to all breeders and owners!

CONGRATULATIONS

Our lucky jacket winners are:

C & D Penner Farm, MB

Badiou Dairy Ltd., MB

WANT TO WIN A JACKET?

All dairy producers who purchase semen are entered into a bi-monthly draw to be eligible to win.




WestGen

STRENGTH IN THE HERD™

UPCOMING CLASSIFICATION

MAY: AB, BC, SK (MR)

JUNE: BC

Have a classifier request a  **OptiMate** for your herd from WestGen for **FREE!!**

The WestGen Bullseye

1625 Angus Campbell Rd, Abbotsford V3G 2G4

tel 604.426.1944 | toll free 1.800.563.5603

fax 604.425.1876 | www.westgen.com

STRENGTH IN THE HERD™