

WestGenTM BULLSEYE

SEPTEMBER
2018

Digital Bullseye articles are available online at www.westgen.com

SHOW YOUR COLOURS!

With any purchase of
Dulet AMAZON RED,
receive a **FREE** Limited
Edition T-Shirt in support of
Canadian Dairy Farmers!



AMAZON RED Drake-Red x Pitbull
0200H011136
Conf +12



As a company owned and directed by farmers, we wish to make it clear where it is we stand on cross border trade and the system of supply management. WestGen as a company and its staff as individuals support the Canadian economy through purchasing Canadian products whenever and wherever possible.

It is worth taking a stand to support our Canadian companies that employ and buy their products within Canada. WestGen sees this as the right thing to do and we encourage you as producers to do your part as well!

#BuyCanadian



Ethica branded shirts are made from organic cotton and recycled polyester. They are designed, manufactured and decorated in Canada.

Minimum 10 dose purchase, limit 2 shirts per customer.
Additional shirts are available to order at \$40 each. Unisex XS - XXXL
Available until October 15, 2018



What is the WestGen Endowment Fund?

Seeking a better way to give back to the Western Canadian Agriculture industry, the WestGen Endowment Fund was created in 2004, and has been an integral part of the company ever since. Earnings from the initial investment of \$5 million are used for the fund.

The mission of the Endowment Fund Committee is to be able to support valuable extension efforts, targeted research and development, and other special projects that will help secure a strong future for the Western Canadian cattle industry.

Our Mission:

To facilitate the improvement of Western Canada's cattle industry, through the support of extension efforts, targeted research and development, and other special projects.

Our Priorities:

Applications that fall within one or more of the following will be given priority:

- Extension Activities that serve to enhance producer knowledge & awareness
- Research & Development targeted towards cattle, with strong potential for field application
- Youth Development that encourages an interest in cattle-related agricultural topics
- Projects & Initiatives that address current issues & areas of interest in the Western Canadian cattle industry

Who Can Apply?

- Individuals and partnerships
- Commercial and non-profit organizations
- Industry associations
- Universities, governments, research and/or development agencies

Learn more about the program and to apply online!

www.westgen.com/community/endowmentfund

APPLY BY SEPTEMBER 30TH!!

It's Time to Put your Plan into Action!



Photo: Holly McFarlane

We can help execute your genetic plan.

- IVF
- ET work
- Recipient Services
- Around the Clock Care
- Focus on Cow Comfort
- Precise Protocols
- Access to our Highly Trained Veterinary Teams
- Professional Service
- Attention to your Genetic Plan
- We Coordinate with your Veterinarian

Let us design a custom priced package to suit your needs and budget!

Call us to put your package together today!

1625 Angus Campbell Rd.
Abbotsford, BC, V3G 2G4
1.800.657.5613 | FAX: 604.425.1876
info@boviteqwest.com

www.boviteqwest.com



BoviteqWest 

BOW VALLEY GENETICS PARTNERSHIP SYNERGISTIC FOR WESTGEN



I'm excited to provide insight and context to the news of WestGen's purchase of a 50% stake in Bow Valley Genetics based in Brooks, AB. Certainly the move is a clear signal of our company's intention to grow its Beef footprint in western Canada, but there will quickly be cross-over benefits for many dairy producers too.

A bit of background on Bow Valley Genetics: Bow Valley Genetics earned its strong reputation by adopting a customer-friendly approach to genetic improvement for beef producers. Individualized treatment of bulls and donor females built their reputation in Custom Semen Collection, Embryo Transfer (ET) and more recently In Vitro Fertilization (IVF) services for the beef industry. By establishing this partnership with Bow Valley, WestGen has an opportunity to use this Prairie location in the heart of cattle country to develop stronger ties to the beef genetics world and with the intention not just to see the reproductive services business expand, but to grow our beef semen sales alongside it. In fact, it is expected that Bow Valley's Brooks, Alberta location will quickly become WestGen's headquarters for its beef genetics activities.



WestGen had already been collaborating with Bow Valley on providing an IVF solution to owners of some of Canada's most sought-after beef genetics. In fact, 2018 has provided the Bow Valley team with an extremely busy season for both ET and IVF work. Many of the customers that use Bow Valley's services are in the marketing business. And while they sell breeding bulls to the commercial industry, many are also semen customers, so bringing these two facets together helps build stronger bonds with our customers. Interestingly, some of the tried and true AI bulls that live in the west will also at time reside at Bow Valley for off-season collection for our Beef-on-Dairy needs. In fact some of the bulls that make up our Black Magic products will be collected at Bow Valley.



We think strategically, and the move to Partner with Bow Valley Genetics makes a great deal of sense. There is significant room for growth in expanding AI beef sales in western Canada. Being part of a business that provides a suite of reproductive solutions for the beef industry, just like dairy, makes the most sense and has the potential to create the most value for our customers and owners.



A handwritten signature in black ink, reading 'Chris Parry'.

Chris Parry, CEO
WestGen Group of Companies

Lautrust – are you missing out?

FOMO – Fear of Missing Out might be the reason some people jump on latest Genomax sires. The desire to get on board early is a pretty powerful force. That said, fear of missing out should also surely apply to top ranked proven sires that exceed genomic expectations. Monument Impression is such a sire, who continues to see demand outstrip supply. Another bull who is sure to get there is Comestar Lautrust.

It's hard to miss a bull right at the top of the Proven LPI list, especially one that combines the notoriety of the Laurie Sheik family alongside an outcross opportunity that a little-used bloodline like his sire Sudan offers. If you've considered Lautrust and have moved on to the next bull, we think a revisit is in order.



Lautrust calves are standouts in heifer pens and we expect his popularity will continue to grow. High production, strong components, solid Type and particularly good Rump Improvement all describe well what Lautrust will do. He is A2A2 and a Repromax™ high fertility option available in both the conventional and sexed package – and if you aren't using him; respectfully, we think you are missing out.



Jersey News

Guimo JAMIE – *Matt x Dynamic* – Bred from a sister to the very popular bull Joyride and sister to the dam of another mainstay, Judo – both who trace to the one and only Paramount Joy – Jamie is a bull all producers will want to incorporate into their breeding plans. His Sire Matt is a top ranked proven LPI sire in his own right. A nice balance of Type and Production is what you can expect from this well-bred sire.



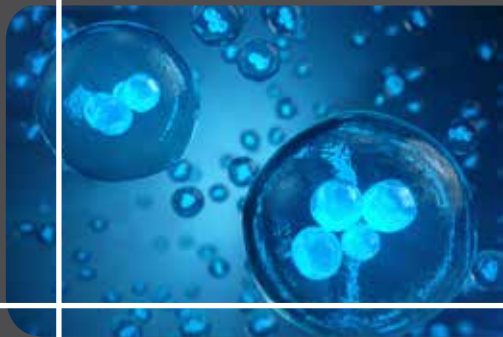
Granddam of **JAMIE**: Fermar Paramount Joy
EX-95-USA

Boost Your Investment with Genomically Tested Embryos!

Genomically Tested embryos provide extreme genetic value! If you could generate a 3300 LPI or higher calf from a 1000 LPI heifer, you would essentially be short-circuiting about 4 generations of genetic improvement. So how can you do it? Genomically tested embryos, that's how. Many of the embryos we have on offer are sisters to future Semex sires or bull mothers and since they are already genomically tested the certainty of what you are buying is much higher than with a dose of semen. Also, where sexed semen typically gives you 90% females, genomically tested embryos provide 100% females.

WestGen offers genomically tested embryos in packages of 6 and offers an insurance against sub-standard pregnancy results. Resulting calves have the genetic potential to lead your herd and to provide a genetic nucleus for your own breed improvement program. It's not just for elite genetic herds – genomically tested embryos provide a compelling economic boost and a strong return on investment for just about any production systems and herd size.

All you need is a plan so talk to your WestGen Genetic Advisor today!



★ JOIN US AT THE EXPO ★

We had a great time last year at the expo and would like you to join us this year! WestGen is looking to put together a WDE tour group to explore dairies and sites in Illinois and Eastern Wisconsin before heading off to Madison!

Contact Paul Meyer if you are interested in signing up for WDE 2018. pmeyer@westgen.com | 604.425.1880

WORLD DAIRY EXPO
OCTOBER 2-6, 2018



ALLIANCE CENTRE | MADISON WISCONSIN



Every year, WestGen awards 4 worthy Western Canadian Agriculture or Veterinary students a \$2,000 Education Award.

DON'T MISS OUT
Apply by Oct. 31, 2018

www.westgen.com/community/educationawards

Apply Today for WestGen's
\$2,000 Education Award!

WESTERN CANADIAN CLASSIC

Western Canadian Classic 2018

The 34th Western Canadian Classic took place from August 21-25th in Abbotsford British Columbia at the Abbotsford Exhibition Park and the Best Western Mission City Lodge. WestGen was excited to welcome the teams to our head office for their Wednesday Fun Night. We are pleased to continue our support of this very unique and highly regarded youth development program.

JUNIOR

Clipping: Navi Schalin & Cheyenne Haak, BC

Dairy Science Quiz: Travis Pruim, SK

Judging Placings: Travis Pruim, SK

Judging Reasons: Travis Pruim, SK

Judging Overall: Travis Pruim, SK

Showman: Navi Schalin, BC



Junior Judge Placing

INTERMEDIATE

Clipping: Kassi Archembault, BC

Dairy Science Quiz: Elizabeth Ferguson, BC

Judging Placings: Clayton Hamming, BC

Judging Reasons: Kyle Vaandrager, BC

Judging Overall: Kyle Vaandrager, BC

Showman: Kristy Vandebrake, AB



Intermediate Clipping

SENIOR:

Clipping: Lee Morey, AB

Dairy Science Quiz: Tara Sweetnam, MB

Judging Placings: Lee Morey, AB

Judging Reasons: Lee Morey, AB

Judging Overall: Lee Morey, AB

Showman: Lorna Hamming, BC



Senior Showmanship



Intermediate Calf

OVERALL SHOWMAN:

Grand: Lorna Hamming, BC (1st Senior)

Reserve: Jodie Stoker, BC (2nd Senior)

HM: Kristy Vandebrake, AB (1st Intermediate)



Herdsman Award



High Point Participant

Banquet photos:
Joanna Barclay



JUNIOR CALF

- 1st:** Wendon Goldwyn Prim (Goldwyn), Emma Van Dijk, AB
2nd: Robella Avalanche Barbie (Avalanche), Kiersten Nienhuis, SK

INTERMEDIATE CALF

- 1st:** Wendon Slolomon Wander (Solomon), Nicole Verhoef, AB
2nd: Bramville Andreas Magician (Andreas), Cassandra Knouse, SK

SENIOR CALF

- 1st:** Wedgwood Lambton Loralie (Lampton P), Logan Jacobsen, BC
2nd: New Mars Solomon Rihanna (Solomon), Niek Schrijver, AB

SUMMER YEARLING

- 1st:** Blondin Lucky AV Big on Fame (Avalanche), Kevin Van Zessen, SK
2nd: Lucky Meihaven Av Rosabel (Avalanche), Clayton Hamming, BC

JUNIOR YEARLING

- 1st:** Wedgwood Jacoby Tahlia (Jacoby), Matthew Brandsma, BC
2nd: Benbie Solomon Pearl (Solomon), Jordan Vaandrager, SK

INTERMEDIATE YEARLING

- 1st:** Hamming Solomon Danica (Solomon), Martin Rypma, BC
2nd: Kenbert Solomon Lively (Solomon), Lauren Nienhuis, SK

GROUP OF 3

- 1st:** British Columbia
2nd: British Columbia

OVERALL CHAMPION CALF:

Hamming Solomon Danica (Solomon), 1st Intermediate Yearling, Martin Rypma, BC

RESERVE:

Wedgwood Lambton Loralie (Lampton P), 1st Senior Calf, Logan Jacobsen, BC

HM:

Wendon Slolomon Wander (Solomon), 1st Intermediate Calf, Nicole Verhoef, AB

High Point Participant: Travis Pruim, SK

Herdsmanship: Saskatchewan

Premier Province: British Columbia

Logan Chalack Memorial Award: Nick Isenschmid, MB



SUPERHERO *to the Rescue*

 **Genomax™**
Leading Genetics

Bred with the intention of combining the milking prowess of Supershot with the components and Health attributes of Numero Uno, **SUPERHERO** flies onto the scene pretty much like those comic book heroes. After all he carries no Mogul, no McCutchen and no Goldwyn in his pedigree, thus offering badly needed and logical mating options for the many daughters that do. No doubt it's in part why Semex used the bull relatively heavy as a sire of sons. Indeed, some of the most attractive Superhero sons are now available having been added to the proof sheet in August.

Here's a bit about each:

Progenesis PARACHUTE - *Superhero x Rubicon* - He's among the first sons released on what could be the industry's most prolific Rubicon daughter, Synergy Rubicon Perfect. The Superhero - Mogul bloodline cross results in a 115 kg Fat yield prediction on what are expected to be nice Typed animals with wide chested and correct Rump structure. Approaching 3500 LPI and at just over 2800 TPI and with double digit Type, this is a great balanced breeding addition to our lineup. Parachute is the Number two Superhero son for LPI available in Canada.



Granddam: Synergy Rubicon Perfect
GP-84-2YR-USA

Siemers DARWIN - *Superhero x Silver* - With 95 kg Fat, +12 Conformation and the Robot Ready designation, Darwin will undoubtedly be a popular addition. He lowers pins and offers a nice balance of Heath trait improvement including mastitis resistance, Milking Speed and Milking Temperament. Darwin is among our top Genomax™ options for Rump improvement.



Great-Granddam: Cherry Crest Manoman Roz
EX-91-5YR-USA

Progenesis DROPKICK - *Superhero x Kingboy* - He gives up a bit of production but at +16 for Conformation, Dropkick is our top Superhero for Type. He is Robot Ready™, he is A2A2 and we think well suited to make some

show calves that will also later become productive and high-scoring replacements.

Progenesis DRYDEN - *Superhero x Kingboy* - a full brother to Dropkick and although rated slightly lower for Type at +14, Dryden offers more Milk and is



Granddam of Dropkick & Dryden: EDG Dahlia
Mogul 2257 VG-86-5YR-CAN

expected to make moderate sized animals that excel on width. He's another very balanced Superhero that will fit any budget.

Sandy-Valley CHALLENGER – *Superhero x Silver* – Sandy-Valley Challenger – Superhero x Silver – His 2896 TPI is our highest among bulls currently available. That rating is elite by any standard. Moderate Type is supported by a prediction for extreme Fat yield and excellent Health trait numbers. We are releasing this product with the idea that clients can make their own herds better not for our competitors to use in their breeding programs. As such you'll need to sign a contract to access semen in the early going on this bull.



Dam: Sandy-Valley Cokiscream

BRING ON THE FORTUNE SONS

A few short years ago Semex-sire Ladys-Manor Octoberfest (Oak x Dorcy) was recognized by Holstein International as the “outcross sire of the year”. Mating him to a Tango daughter created Progenesis Fortune and now more careful mating within the Semex Product Development Program has led to some very enticing sons, the first pair who have just been released. They are both must-use types of bulls!

Progenesis HEMINGWAY – *Fortune x Jedi* – Our highest LPI offering at 3561, Hemingway provides a big shot of milk along with positive deviations. His +12 Conformation rating promises Excellent udders and nice dairy framed cows. On Health traits he's no slouch either providing solid ratings for HerdLife, Daughter Fertility, Mastitis Resistance and Calving Ability. He is in very short supply to start but hopefully will be able to catch up with demand as Fall progresses.



Progenesis HEISENBERG – *Fortune x Jedi* – Bred from a full sister to Hemingway's dam, Heisenberg just like Hemingway is a Robot Ready™ option, offering slightly less production, similar Type and superior Health traits compared to his cousin. In particular his 113 for Daughter Fertility stands out as does a 110 rating for Mastitis Resistance. In fact, the only (Proven or Genomax) sire on the proof sheet that matches that number is the proven sire, Control. The pair are among a very elite group that offer 3500 LPI with double digit Type. Good Health traits are a pretty nice bonus!

BEST VALUE BULL:

Sandy-Valley CHAMONIX – *Eugenio x Mogul* – A2 and Robot Ready™, this bull offers impressive production numbers, Double digit Type, and good Rump improvement – all at a very attractive price. With a name like Chamonix he sounds like a clean-up bull – his proof numbers suggest otherwise!

UK Tour

Join WestGen in the UK January 13-28, 2019!

Join us for a fabulous 16 day adventure! We intend to visit Scotland, England and Wales with a mix of sightseeing and farms.

Only 40 spaces available! Book your space early!

UNITED KINGDOM



Itinerary:

**\$5,850 per person (single room)
\$4,300 per person (with roommate)**

Book your space today!

January 13	Depart Canada
January 14	Arrive in Edinburgh, dinner at Hotel
January 15	Sight seeing in Edinburgh: Edinburgh Castle tour, dungeon tour or Castle hop-on/hop-off bus tour.
January 16	Farm Tours: Southern Scotland, travel to Carlisle
January 17	Sight seeing: Hadrians Wall and Carlisle Castle
January 18	Farm Tours: Lake District, travel to Chester
January 19	Farm Tours: North Wales
January 20	Free day for Sight Seeing: Chester Cathedral or Beatles Story Experience, Liverpool
January 21	Farm Tours: Chester, travel to Uttoxeter
January 22	JCB Factory Tour, Marsten Brewery Tour, Drive to Stratford Upon Avon
January 23	Sight seeing: Warwick Castle & Shakespeare play
January 24	Drive through Cotswolds Villages: Stow on the Wold, Bourton on the Water, Bibury, Burford, end in Oxford
January 25	Sight Seeing: Oxford, travel to London
January 26-27	Sight Seeing: London: Your choice of London Eye, London Bridge or Tower, Trafalgar Square
January 28	Travel home from Heathrow Airport
(January 9-13)	Swiss Expo Add-on would include Travel to Lausanne and 5 nights Accommodation while you visit the Expo +\$1,250 per person

If you would like to reserve your space and learn more about the UK tour, please call Kristie Baouya at 604.425.1890 or 1.800.563.5603 ext. 220 or email kbaouya@westgen.com for more information. We hope to have you join us!

**Itinerary subject to change. Pricing is an estimate, to be confirmed upon booking.
Non-refundable \$1,000 deposit per person required or reserve your spot by Sept. 28, 2018.
List of farms and detailed hotel information available soon!*

Winner's Circle

A sincere congratulations to
all breeders and owners!

VERY GOOD FIRST LACTATION

ALTAPPEL DOORMAN DARLING VG-86

ALTAPPEL DOORMAN CLAIR VG-85

SPRUCE LANE DAIRIES LTD., AB

BENTHEMMER FIX REMEDY VG-86

BENTHEMMER FIX CARMELITA VG-85

BENTHEM DAIRY LTD., AB

BLOSSOMDAIRY OCTANE ROCKET VG-86

BLOSSOMDAIRY HIGH DELIGHT VG-85

BLOSSOM DAIRY LTD., BC

BRADNER-R DOORMAN MACKY VG-86

BRADNER-R DOORMAN GEORGETTE VG-85

BRADNER R FARMS, BC

DYKSHOORNS WICKHAM 616 VG-86

DYKSHOORNS IMPRESSION 618 VG-85

DYKSHOORN FARMS LTD., BC

EVERGRAZE MUKLUK SOLOMON VG-86

EVERGRAZE SOLOMON PANAMA VG-86

EVERGRAZE HOLSTEINS LTD., BC

GOLDENSET SNOWY VIBE VG-87

GOLDENSET EMMYLA SOLOMON VG-85

CHRIS DEWITT JR., BC

HAMMINGVIEW CITY MONTANA VG-86

HAMMINGVIEW WICKHAM MUNCH VG-85

HAMMINGVIEW FARMS, BC

JONKERVILLE NUMERO UNO BRYLIE VG-86

JONKERVILLE LETITSNOW MARTINE VG-85

PEAK VALLEY FARMS TLD, BC

ROSWITHA HIGH OCTANE MAXI VG-86

ROSWITHA FIX 2135 VG-85

ROSWITHA HIGH OCTANE JULES VG-85

ROSWITHA HIGH OCTANE SNICKERS VG-85

ROSWITHA HOLSTEINS LTD., MB

SKYCREST DADDY LONG LEGS VG-87

SKYCREST MERIDIAN PIZAZZ VG-87

SKYCREST SOLOMON OCTOPUS VG-87

SKYCREST DOORMAN NOTCHA MOMMA VG-86

SKYCREST WINDBROOK FANCYPANTS VG-86

SKYCREST DOORMAN IWANNA VG-85

SKYCREST WINDBROOK FIREFLY VG-85

SKYCREST HOLSTEINS LTD., AB

SPRINGBEND WINDBROOK EDEN VG-86

SPRINGBEND DARYL DA BOMB VG-85

BLACK FOREST FARM LTD., BC

STARCREST DOORMAN EFFUSIVE VG-87

STARCREST DURBIN DELAINEY D VG-86

JAMES & KIRSTY MCAVOY, BC

SUNNYHOME WICKHAM MULAN VG-86

SUNNYHOME DOORMAN MARCIE VG-85

SUNNYHOME INTEGRAL RED RAIN VG-85

SUNNYHOME FARMS LTD., BC

SWEETRIDGE CINDERDOOR RHEBA VG-87

SWEETRIDGE DOOR BELLE VG-86

HAROLD & MIRIAM SWEETNAM, MB

WESTCOAST DOORMAN CASH 3444 VG-88

WESTCOAST ACCURATE BDUST 3894 VG-86

WESTCOAST PENMAN GRACE 3609 VG-86

MILKSOURCE BUTTERSCOTCH-ET VG-85

MOUNT ELM DOORMAN CRISSCROSS VG-85

MOUNT ELM FINGERS CROSSED VG-85

PROGENESIS AFTERBURNER DARCY VG-85

WESTCOAST ABBOTT CHANTAL 4486 VG-85

WESTCOAST ARMOUR LUCY 466 3669 VG-85

WESTCOAST DOORMAN ARIEL 3985 VG-85

WESTCOAST DOORS AMANADA 3968 VG-85

WESTCOAST DRAFTPICK ROSA 4073 VG-85

WESTCOAST MILLEN BEHAVE 3865 VG-85

WESTCOAST SAVIOR 455 VG-85

WESTCOAST SOCHI TREASURE VG-85

WESTCOAST HOLSTEINS, BC

ELMBRIDGE DOORMAN SHES A LYNX VG-87

NICOLE PARKINSON, BC

PETER TUYTEL JR., BC

JAMADO ALONZO SARIYA VG-87

DEN OUSDEN DAIRY LTD., AB

DELGREN LEMUST JAIMIE VG-86

DELGREN FEVER MIMI VG-86

DELORME FARMS LTD., MB

DETIMDALE CLICKER WICKHAM VG-86

TIM HOFSTRA, AB

LAMPADA REGINALD PARALYZER VG-86

FRED FORNWALD & SONS FARMS LTD., SK

JORDAN KONKEL, SK

NEW MARS HIGH OCTANE BRAELYN VG-86

NEW MARS DAIRY LTD., AB

ROSWITHA AUTUMN LANE HO RICKIE VG-86

AUTUMN LANE HOLSTEINS, BC

ROSWITHA HOLSTEINS LTD., MB

SILVERMAPLE FARLEY VG-86

BEN & SUZANNE CUTHBERT, BC

SLEDGESTAR S VERONICA VG-86

TOM HOFSTRA, AB

TYSON RIETVELD, AB

SUNNINGHILL WINDBROOK BRIANNA VG-86

SUNNINGHILL HOLSTEINS, BC

ZIMMER HIGH OCTANE INDIA VG-86

DUANE G. ZIMMER, AB

BENCO EDGE TONKA VG-85

BENCO LOUVRE CONTRAST VG-85

BENCO TIGRESS TONKA VG-85

BENCO HOLSTEINS, BC

BENNER MUSCADET JAVA VG-85

BENNER HOLSTEINS LTD., MB

BONIVISTA VINDICATE INTEGRAL VG-85

BONIVISTA FARMS, BC

BRINKLAND HIGHOCTANE IKEA VG-85

SPRINGBEND ENVOIOUS CHARLIE VG-85

BRINKLAND DAIRY LTD., BC

BROOKNOOK RIGOR TREAT VG-85

BROOKNOOK FARMS, BC

COULEEVIEW CONVERSE 1108 VG-85

COULEE VIEW FARMS, AB

CRESTOMERE BYWAY VANITY VG-85

CRESTOMERE HOLSTEINS, AB

DELTERRA WADA IMPRESSION VG-85

DELTERRA HOLSTEINS, BC

SUNNINGHILL HOLSTEINS, BC

DONFIELD DOORMAN BELLA VG-85

DONFIELD DOORMAN BRIGET VG-85

DONFIELD DOORMAN LEXUS VG-85

DONFIELD FARMS LTD., MB

ELKVIEW IMPRESSION LINDA VG-85

ELKVIEW FARMS LTD., BC

ENTERPRIZE LITTLETON BASIL 996 VG-85

G & A FERGUSON FARM, BC

HILLRIDGE IMPRESSION 1944 VG-85

HILLRIDGE FARMING CO. LTD., AB

HUNTCLIFF SNOWY EMMA VG-85

HUNTCLIFF DAIRY, AB

HYLAC DRAKE ABBELA VG-85

HYLAC HOLSTEINS, AB

IBERG DUSTY 1881 VG-85

IBERG FARMS LTD., BC

INNISLAKE ENVOIOUS KATCH VG-85

INNISLAKE DAIRY FARM, AB

JAMEVALL CHIARA REGINALD VG-85

JAMES VALLEY HUTTERIAN MUTUAL CORP., MB

KOZAK ADONIS GINA VG-85

KOZAK HOLSTEINS LTD., AB

LAREST HIGH OCTANE KOLLIDE VG-85

SOUTHVIEW DAIRY, MB

LAVENDER ENDURING PHYLLIS VG-85

LAVENDER DOORMAN RUMOUR VG-85

LAVENDER DOORMAN PRINCESS VG-85

LAVENDER FARMS LTD., BC

LINDRIAN S P ICONA VG-85

JOHN TAMIS, BC

LOVHILL SOLOMON SUGAR BEET VG-85

LOVHOLM HOLSTEINS, BC

L P SUPERPOWER ROCKABILLY 2418 VG-85

RICHARD & ASHLEY VANDER KOOL, BC

LUCKY DOORMAN ROCKSTAR VG-85

LUCKY HILL DAIRY LTD., AB

LYBA ELUDE LADY VG-85

SHADOW RIDGE DAIRY, BC

MEADOW GREEN SNOWY CODETTE VG-85

MEADOW GREEN FARMS LTD., BC

NARFA ELUDE IRIS VG-85

MISSION TRAIL FARMS, MB

Winner's Circle

NORWIND LAUTHORITY MARS VG-85

NORTHWIND DAIRY, MB

NOVUM LONA BOMBA VG-85

NOVUM LYRA SURFER VG-85

ENTREPRISES LAVOIE INC., AB

READORE SUPERPOWER SILA VG-85

WHITEGOLD DAIRY, MB

RENOWNED MEGAWATT PEACH VG-85

BRINKLAND DAIRY LTD., BC

RENOWNED HOLSTEINS, BC

RIETBEN DODGE NICKY VG-85

RIETBEN ELUDE CHLOE VG-85

RIETBEN MEGATRON CHANEL VG-85

RIETVELD DAIRIES LTD., AB

ROCKLEDGE ALICE TONKA VG-85

ROCKLEDGE RASCAL DOORMAN VG-85

ROCKLEDGE RIPPLE SOLOMON VG-85

ROCKLEDGE SUSAN SOLOMON VG-85

ROCKLEDGE FARMS LTD., BC

ROMAHOEVE PLEASE P MARGE VG-85

MARCEL & ROSEMARY LOOGMAN, AB

ROMYNS HIGH O BANANA JUICE VG-85

ROMYN-HILL FARM LTD., BC

ROSELANE CONTRAST LENA VG-85

WIM & JENNY RUYSCHE, AB

SCOTCH LAKE ACOUSTIQ ICE COLD VG-85

TOTAL HOLSTEINS, MB

TRI LEA FARM INC., MB

SERLI SAMMY BELINDA VG-85

SERLI HOLSTEIN LTD., MB

SHADOW LAUTION 472 VG-85

TONY NEELS, BC

SHADYNOOK H O FOOLS GOLDIE VG-85

SHADYNOOK FARMS LTD., BC

SIMMELINKS BENZ BLACK VG-85

SIMMELINK FARM, AB

SPALLVUE DOORMAN BAMA VG-85

SPALLVUE DOORMAN BEAUTY VG-85

SPALLVUE DOORMAN DELTA VG-85

SPALLVUE WICKHAM COCO VG-85

SPALLVUE SNOWY CHANDRA VG-85

LUTTMERDING FARMS, BC

SPLITRAIL SUPERPOWER DORA VG-85

SPLITRAIL HOLSTEINS, BC

SKYWEST HOLSTEINS, AB

SPRINGBEND REGINALD DROWSY VG-85

STEFFAINE DEWITT, BC

SPRINGBEND REGINALD VALENTINE VG-85

SPRINGBEND FARMS LTD., BC

SUNCOUNTRY HALLY WINDBROOK VG-85

SUNCOUNTRY PIPER WINDBROOK VG-85

SUNCOUNTRY HOLSTEINS LTD., BC

SUNNYHOME SNOWY BLOSSOM VG-85

SUNNYHOME FARMS LTD., BC

RIETVELD DAIRIES LTD., BC

SUNTASIA ELUDE AMBROSIA VG-85

JOHN SUNDER, BC

TWINAIRVIEW ELUDE JOLLY VG-85

TWINAIRVIEW SOLOMON TWIX VG-85

TWINAIRVIEW SOLOMON UGANDA VG-85

TWINAIRVIEW HOLSTEINS LTD., BC

WALLYANN DOORMAN AMADEUS VG-85

WALLYANN HOLSTEINS LTD., BC

86 VANDEL LOVE CONSTANCE VG-85

LAWRENCE & BONNIE VAN DEN BOSSCHE, MB

FIRST TIME EXCELLENT

BERNALTA DUDE DRESSY EX-93

SUNNYMERE FEVER LILY 690 EX-93

MOSNANG DUDE LILAH EX-92

MOSNANG HOLSTEINS LTD, AB

SKYCREST GOLDWYN LADYS NIGHT EX-92

SKYCREST SID NICKERBOCKERS EX-91

SKYCREST HOLSTEINS LTD, AB

DARCOR WINDBROOK MIKALA EX-91

DARRIN RASMUSON, AB

RIETBEN SID CELEBRATE EX-91

CRESTOMERE HOLSTEINS, AB

LEE SIMANTON, AB

ROSELANE STEADY BREANNA EX-91

WIM & JENNY RUYSCHE, AB

TAPPENVALE WINDBROOK CARSON EX-91

TAPPENVALE FARM LTD, BC

THORNSPYC SID KELSEY EX-91

THORNSPYC DAIRY – VAN DE BRAKE FAMILY, AB

SUNNINGHILL STEADY JYNX EX-91

SUNNINGHILL HOLSTEINS, BC

SWEETRIDGE WINDBROOK TAPDANCE EX-91

HAROLD & MIRIAM SWEETNAM, MB

BENTHEMMER DUFF SPECTRUM X-91

BENTHEMBER MONSTER SAMMY EX-90

SEPTEMBER DAIRY LTD, AB

BONIVISTA PILSNER LAUTHORITY EX-91

BONIVISTA DETOUR SAMMY EX-90

BONIVISTA HILLSIDE MARK EX-90

BONIVISTA JEMMYE LAUTHORITY EX-90

BONIVISTA FARMS, BC

STARCREST LAMPADA LA EXCLUSIVE EX-91

STARCREST FEVER CARRERA EX-90

JAMES & KIRSTY MCAVOY, BC

SUNCOUNTRY BREANN WINDBROOK EX-91

SUNCOUNTRY CARISSA WINDBROOK EX-90

SUNCOUNTRY SIMONA WINDBROOK EX-90

SUNCOUNTRY HOLSTEINS LTD, BC

WOUTERS CHELIOS POMPA EX-91

WOUTERS JAY KLISSA EX-90

WOUTERS DAIRY, AB

ZIMMER WINDBROOK ALLEGRA EX-91

ZIMMER GOLD JEWEL EX-90

DUANE G. ZIMMER, AB

ALTAPPEL WINDBROOK STARSHINE EX-90

SPRUCE LANE DAIRIES LTD, AB

ANSORGER FINAL CUT 615 EX-90

MARYLANDER HOLSTEINS, AB

AUTUMN LANE FEVER SASHA EX-90

FRED FORNWALD & SONS FARMS LTD, MB

BARCLAY FEVER MONSOON EX-90

WISEVIEW FARMS, BC

BENCO BARISTA UNO EX-90

BENCO DALYS SEAVER EX-90

BENCO JAXIE WINDBROOK EX-90

BENCO TIGERLILY LAUTHORITY EX-90

BENCO HOLSTEINS, BC

BENTHEMMER REGINALD RAYNE EX-90

BENTHEM DAIRY LTD, AB

BERNALTA FAWLEY JOY EX-90

DARRIN RASMUSON, AB

BEYER WINDBROOK TIPPY 850 EX-90

COALVIEW REGINALD MILEY 1584 EX-90

FARVIEW HOLSTEINS, AB

BORNHAVEN SASHANNA FEVER W EX-90

BORNHAVEN VAN ISLY FEVER D EX-90

VILLAGE RANCH LTD, BC

BLOSSOMDAIRY SAM RELECTION EX-90

BLOSSOM DAIRY LTD, BC

BRINKLAND DOORMAN RHONDA EX-90

BRINKLAND DAIRY LTD, BC

COLBRIT DOORMAN ROYAL EX-90

COLBRIT HOLSTEINS, BC

COYTEE WINDBROOK VIRGO EX-90

KOZAK HOLSTEINS LTD, AB

DARIDELITE FEVER MS MYRNA EX-90

DARIDELITE VANILLA TWIST EX-90

DARIDELITE WINDBROOK SHIFTWELL EX-90

DARI DELITE FARM LTD, BC

DECOT LOPPORTUNIST MARIE EX-90

VAN DER KOOIJ DAIRY, AB

DETIMDALE DEMMY OUTSIDE EX-90

TIM HOFSTRA, AB

FAVOUR PAT WINDBROOK EX-90

FAVOUR HOLSTEINS, AB

GLORYBOUND JUSTA DOORMAN EX-90

GLORYBOUND HOLSTEINS, BC

GOLDENSET GOLDWYN CASEY EX-90

CHRIS DEWITT JR., BC

A sincere congratulations to all breeders and owners!

GRAFARM FLOPPITY LADNER EX-90

TILMA DAIRIES, AB

GREENDIKE LAUTHORITY VAL 604 EX-90

GROENENDIJK, BC

HILLRIDGE FEVER 1525 EX-90

HILLRIDGE FARMING CO. LTD, AB

HYLAC WINDBROOK THEA EX-90

HYLAC HOLSTEINS, AB

INNISLAKE SC FANTA EX-90

INNISLAKE DAIRY FARM LTD, AB

SPRUCE LANE DAIRIES LTD, AB

JAMADO STANLEYCUP 722 EX-90

DEN OUDSTEN DAIRY LTD, AB

JAMEVALL MARK LEE GOLDWYN EX-90

JAMEVALL MAY SMILE GOLDWYN EX-90

JAMES VALLEY HUTTERIAN MUTUAL CORP., MB

KELTON FEVER SHARON 385 EX-90

KELTON HOLSTEINS LTD, BC

KENBERT CARLI LAUTHOENJOY ET EX-90

ENTREPRISES LAVOIE INC., AB

KNEEHILL SCOTT SPIRTE ELMA EX-90

PHILIPSEN DAIRIES LTD, AB

LAREST ATTIC MANHATTAN EX-90

SOUTHVIEW DAIRY, MB

LYBA DOORMAN DACEY EX-90

SHADOW RIDGE DAIRY, BC

MARTNKAY LAUTHORITY ALBA EX-90

M.H. & A.K. LEYENHORST, MB

MEADOW GREEN LETTISNOW FRANCIS EX-90

MEADOW GREEN FARMS LTD, BC

MELINKE PLANNER RONNIE EX-90

MELINKE FARMS LTD, BC

MILKNIUM ALFREDO PANTO EX-90

ISAAC DAIRY LTD, MB

MORSAN UNO LILAC EX-90

MORSAN WINDBROOK STARITE EX-90

MORSAN WIND STARLITE EX-90

WESTCOAST HOLSTEINS, BC

NEW MARS SID GABRIELLE EX-90

NEW MARS SID IZABELLA EX-90

NEW MARS DAIRY LTD, AB

NOREYDO DOORMAN RICE EX-90

NOREYDO FARM, MB

NOVUM SANNIE SYMPATIO EX-90

ENTREPRISES LAVOIE INC., AB

PENDENE WINDBROOK ROXY EX-90

PENDRAY FARMS LTD, BC

POELMAN GOLDWYN VELVET EX-90

HAMMINGVIEW FARMS LTD, BC

POELMAN SEAVER RIZZO EX-90

SUNNY VALE FARM LTD, BC

POELMAN WINDBROOK MERCEDES EX-90

T & L CATTLE LTD, BC

POL BUTTE NUMERO FOOLS GOLD EX-90

LUCKY HILL DAIRY LTD, AB

RAYA DENISON FAMILY EX-90

RAYA LAUTHORITY PEACHEY EX-90

RAYA HOLSTEINS, MB

READORE WINDBROOK MEGANTIQUE EX-90

REAL J. SIMON, MB

ROCKLEDGE SUSAN LAUTHORITY EX-90

ROCKLEDGE FARMS LTD, BC

ROCKYMOUNTAIN GOLD DORRIE EX-90

RIETVELD DAIRIES LTD, AB

TOM HOFSTRA, AB

ROMAHOEVE ORICAL RDC ROWDY EX-90

MARCEL & ROSEMARY LOOGMAN, AB

ROMYNS UNO HATRICK EX-90

SHADYNOOK FARMS LTD, BC

SAANWOOD REGINALD TAMI EX-90

SAANWOOD SID ASHLEIGH EX-90

VIEWFIELD FARMS LTD, BC

SIGURJON RUMOR ALPINE EX-90

SIGURDSON DAIRIES, MB

SILVERMAPLE TEE OFF GLISSEN EX-90

BEN & SUZANNE CUTHBERT, BC

SOUTHSKY WINDBROOK PANDA EX-90

SOUTHERN SKIES DAIRY FARM LTD, AB

SPALLVUE JASPER IZZALYN EX-90

LUTTMERDING FARMS, BC

SPRINGBUTTE ARTFUL MIST EX-90

SPRINGBUTTE SID JANAE EX-90

HENRY SLOMP, AB

STREAMLINE WINDBROOK SASSY EX-90

MARTIN & JENNIFER HAMMING, MB

SUNNYHOME FEVER GINA EX-90

SUNNYHOME FARMS LTD, BC

VANDEL FEVER SATISFACTION EX-90

VANDEL LAUTHORITY RIO EX-90

LAWRENCE & BONNIE VAN DEN BOSSCHE, MB

VANDYK-S WINDBROOK CANDY EX-90

BEYER DAIRY LTD, AB

WALLYANN UNO SNOW WHITE EX-90

WALLYANN HOLSTEINS LTD, BC

LONGTIME PRODUCTION AWARD

LUCKY TITANIC HEIDE

150,979 KG 3.4% F 2.9% P

LUCKY HILL DAIRY LTD., AB

POL BUTTE STORMATIC DIXY ET

127,050 KG 3.9% F 3.1% P

VAN DEN POL DAIRY, AB

WESTERNROSE OUTSIDE 1295

126,037 KG 3.4% F 3.0% P

ROSE GATE DAIRY FARMS LTD., BC

SUPLESSE PICOLO JEM

123,924 KG 3.4% F 3.1% P

SUPLESSE FARM LTD., BC

ABCLAN JERICO 253

120,538 KG 3.0% F 2.9% P

ABCLAN DAIRY LTD., BC

STANHOPE BRIGITTE GIBSON

110,900 KG 4.4% F 3.3% P

MELINKE FARMS LTD., BC

ELKREST SAMBUKA 1913

106,837 KG 3.7% F 3.2% P

ELKREST FARMS LTD., SK

PREVIEW OUTSIDE SASSY

102,479 KG 3.7% F 3.2% P

J VIEW HOLSTEINS, BC

TONESA LOLTIA SEYMOUR 815

102,469 KG 3.3% F 2.8% P

TONESA HOLSTEINS LTD., BC

KLEEHAVEN OUTSIDE CREAM

101,182 KG 3.9% F 3.2% P

IVAN & DIANE NAYLOR, MB

UBYSSEY ENDREDIBLE ALAMA 8035

100,742 KG 4.0% F 3.2% P

UBC DAIRY EDUCATION & RESEARCH CENTRE, BC

IBERG ROSE CAMILA

100,656 KG 3.5% F 3.4% P

ST. CHRISTOPHER HOLSTEINS, BC

STAR BROOD AWARDS

ELMBRIDGE GOLDWYN DARLING 18*

HAMMING HOLSTEINS LTD., BC

RAINYRIDGE LEE CANDICE 16*

RONALD BOERCHERS, MB

JAMES VALLEY HUTTERIAN MUTUAL CORP., MB

MARK HENRY, MB

BENNER HOLSTEINS LTD., MB

GEN-I-BEQ GOLDWYN SECRET 15*

BRADNER R FARMS, BC

WILLSWIKK OUTSIDE DELLA 15*

WILLSWIKK COUSTEAU JOANNA 13*

WIKKSHAVEN HOLSTEINS, BC

GOLDENSET HEIDI GOLDWYN 13*

CHRIS DEWITT, JR., BC

SUNNYHOME GOLDWYN MARCIE 13*

SUNNYHOME FARMS LTD., BC

Winner's Circle

A sincere congratulations to
all breeders and owners!

CEDARWAL SASSY ALLEN 12*

ROCKLEDGE FARMS LTD

CALBRETT GOLDWYN LIZA 11*

CEDARWAL ICING TITANIC 10*

CEDARWAL FARMS LTD., BC

VANDYK-K GIBSON PAISLEY-ET 10*

BALGONIE HOLSTEINS LTD., SK

ROBELLA HOLSTEINS, SK

WESTLIBERTY JASPER MARILYN 10*

TIM KNULL, AB

POELMAN GIBSON ROSELYNN 9*

SUNNY VALE FARM LTD., BC

STANHOPE HARA GIBSON 9*

STANHOPE DAIRY FARM LTD., BC

WEDGEWOOD HOLSTEINS, BC

BERNALTA GIBSON ROSETTE 8*

BAUMANN HOLSTEINS, SK

BUTZ-BUTLER GOLD BANNER-ET 6*

VAN DEN POL DAIRY, AB

ELMBRIDGE MR BURNS LIVELY 5*

NICOLE PARKINSON, BC

PETER TUYTEL, JR., BC

HYLJON BUCKEYE BRIDGET 4*

VEDDERLEA FARM LTD., BC

LAMPADA GIBSON JANICE 4*

LAKEFIELD FARM, MB

MOSNANG ASHLAR CRUNCH 4*

MOSNANG HOLSTEINS LTD., AB

MS CHASSITY FB CALISTA-ET 4*

ROSE GATE DAIRY FARMS LTD., BC

SUPER AWARDS

AGGIES WINDBROOK JESSICA

BCAs: 335 367 332

HERMANN HUEGING, MB

ALLEY WINDBROOK NANCY

BCAs: 342 318 325

ALLEY HOLSTEINS, SK

BREMERDAIRY BOWMAN 786

BCAs: 337 324 326

CLIFFVIEW FARMS LTD, BC

CEDARWAL WINDBROOK CHIC

BCAs: 332 314 305

CEDARWAL FARMS LTD, BC

CLEARSKY ASHLAR SHERI 101

BCAs: 268 367 301

HOUWELING FARMS LTD, AB

ELKREST BONAIR 3209

BCAs: 313 331 318

ELKREST EMBER 3486

BCAs: 359 375 368

ELKREST STANLEYCUP 3273

BCAs: 319 383 328

ELKREST MR BURNS 2992

BCAs: 301 332 334

ELKREST FARMS LTD, SK

FRASER EDGE BRUNO CANDY 313

BCAs: 331 330 319

FRASER EDGE FARMS LTD, BC

HAMMING WINDBROOK DANA

BCAs: 300 318 314

HAMMING FEVER SHANDI

BCAs: 288 328 287

HAMMING HOLSTEINS LTD, BC

HAMMINGVIEW STANLEYCUP MATRIX

BCAs: 289 363 288

HAMMINGVIEW FARMS LTD, BC

LAVENDER WINDBROOK LOVELY

BCAs: 311 341 310

LAVENDER FARMS LTD, BC

LLOYDSHAVEN LOPPORTUNIST EMILY

BCAs: 309 345 335

LLOYDSHAVEN HOLSTEINS LTD, BC

LUYMES NUMERO UNO CLARA

BCAs: 348 344 336

LUYMES DAIRY FARM, BC

MARSFIELD DENZEL KIMMY

BCAs: 340 412 344

MARSFIELD LAUTHORITY FONTAE

BCAs: 348 368 346

MARSFIELD WINDBROOK BLAZE

BCAs: 316 390 340

GERT & SONJA SCHRUYVER, AB

MARTIANN FEVER ROXIE 88

BCAs: 305 326 302

MARTIANN HOLSTEINS LTD, BC

MOSNANG LAUTHORITY WHIZBANG

BCAs: 299 356 291

MOSNANG HOLSTEINS LTD, AB

NIFERA FEVER FANTASTIC

BCAs: 349 325 336

NIFERA LORDSHIP STEPHANIE

BCAs: 277 341 309

NIFERA HOLSTEINS, AB

NORMANNA LTHRTY SAMANTHA

BCAs: 280 380 316

TONESA HOLSTEINS LTD, BC

ROBELLA DENISON MISTY

BCAs: 292 332 334

ROBELLA HOLSTEINS, SK

SIGURJON CARLY GATEAU

BCAs: 336 346 334

SIGURDSON DAIRIES

TELFORD INFRAROUGE 213

BCAs: 282 337 307

KISH FARMS LTD, BC

TENHOVE SAILING PRINCESS

BCAs: 335 355 339

ASPENRIDGE FARMS LTD, AB

UBYSSY SIRIUS GOASTLY 2110

BCAs: 287 339 292

UBC DAIRY EDUCATION & RESEARCH CENTRE, BC

VANDEL REGINALD OLIVIA

BCAs: 341 323 348

LAWRENCE & BONNIE VAN DEN BOSSCHE, MB

VANDENDOO LAUTHORITY 2606

BCAs: 318 343 315

VANDENDOO FARMS, AB

WESTERNROSE BALTIMOR 1221

BCAs: 300 293 296

ROSE GATE DAIRY FARMS LTD, BC

WILLSWIKK FEVER DYNASTY

BCAs: 256 369 268

WILLSWIKK JORDAN DALLIN

BCAs: 252 320 268

J. WILLIAM WIKKERINK FARMS LTD, BC


WestGen[™]

STRENGTH IN THE HERD[™]

CONGRATULATIONS

Our lucky jacket winners are:
River Valley Holsteins, SK
Jamalee Farms, BC



WANT TO WIN A


JACKET?

All dairy producers
who purchase semen are
entered into a bi-monthly
draw to be eligible to win.

UPCOMING CLASSIFICATION

September: Saskatchewan (Mid)

October: BC (MR)

Have a classifier request a  **OptiMate** for
your herd from WestGen for FREE!!

The WestGen Bullseye

1625 Angus Campbell Rd,
Abbotsford V3G 2G4

tel 604.426.1944 | toll free

1.800.563.5603

fax 604.425.1876

www.westgen.com