

2025 DECEMBER

HOLSTEIN HIGHLIGHTS

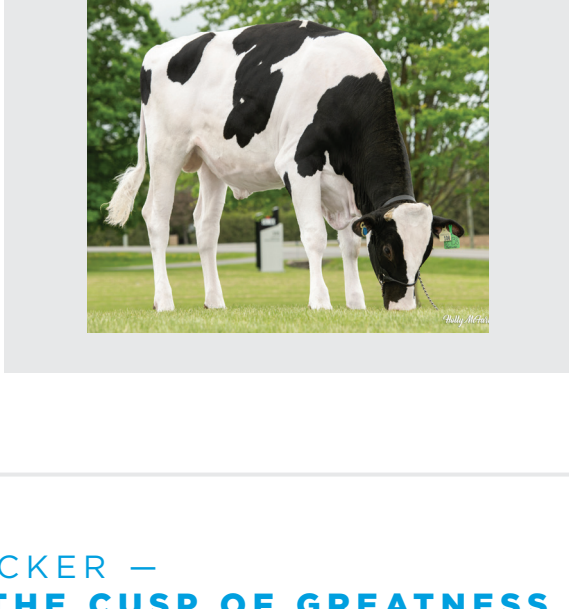
A Proof Round filled with lots of HO HO HO Highlights!

We know you've been good this year and naturally we want to reward you as we enter the festive season. Whether it's the bulls you have daughters from who are your herd's present and future or the bulls you will mate these daughters too – the Semex lineup of bulls WestGen proudly represents received one of it's strongest genetic proof round endorsements in years.

It was a great day if you like daughter Proven Balanced Breeding bulls. It was also a great day if you like to dive in on the latest genomic leaders. Whether you like Canadian numbers or US, whether you need Production leaders or want top level Type, the December sire update was very generous to all of us.

HIGHLIGHTS FROM THE DECEMBER PROOFS

- **Claynook Cracker** – puts Proven top-10 bulls on notice – there's a new bull in town!
- **Pattern** a second Semex Zazzle makes debut immediately as breeds #1 Pro\$ bull
- **Progenesis Monteverdi** – up two points on Herd Life and moves up to #3 for LPI
- Monteverdi's son **Milan** tops again on the young Geneomic list
- **Progenesis Sheamus-P** – a Milan son takes the #2 position on the young Genomic list
- Milan's full sister provides four sons in the top 25 young Genomic list: Monkey, Manny, Mango and Ludwig
- The top 11 LPI Genomic young bulls all call Semex home
- Two sons from the Deluxe Highlighted family are top 5 LPI on young Genomic list: Hooray and Hi-Level
- **Mattenhof Harris** stands alone at +18 as the breed's Proven Conformation leader
- Harris also the #1 Mammary improver at +15
- **Pathway & Havenofear** join a short list of Proven bulls with 900 kg M & +12 Conf



CRACKER – ON THE CUSP OF GREATNESS

In May his LPI stood at 3700 and +6 Conformation as his very first daughters began to calve. Six months later he has nearly 100 daughters milking, over 80 classified, but lacking 20 daughters past 120 days in milk, he will need to wait until April for full Proven status.

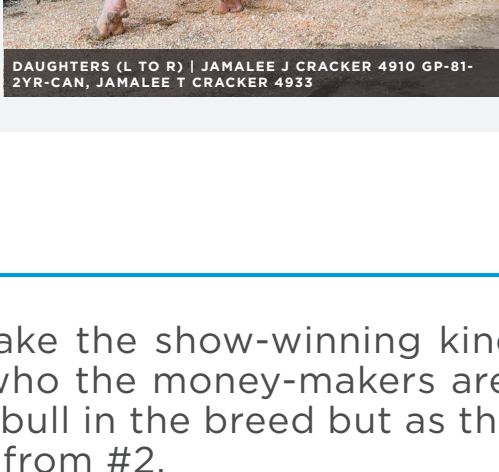
In the meantime, he has an official Type proof at +8, sports a +11 for F&L along with a 93% Reliability GPA (daughter info clearly contributing) with nearly 130 kg Fat and 70 kg Protein. His LPI today at 3915 would be good enough for the #2 position on the Proven list and a 200 point increase since spring. We're excited for Cracker – stay tuned for April! Take note as well of Claynook Coops from Cracker's Ibendigo sister, Anahita's top son with nearly 4000 LPI and +16 Conformation!

0200HO12377

CLAYNOOK CRACKER

GLPI AT +3915 | +926kg MILK | +127kg FAT | +70kg PRO

- Calving Ease, RobotReady™ and Fertility First
- Would be #2 LPI +3915 GLPI, +926 Milk, +127 Fat, +70 Protein
- 105 MR, 104 IMM, +108 ME
- +8 Conf, +11 F&L
- COOPS from his full sister ANAHITA'S top LPI son



DAUGHTERS (L TO R) | JAMALEE J CRACKER 4910 GP-81-2YR-CAN, JAMALEE Y CRACKER 4933

PATTERN – A NEW PRO\$ LEADER MAKES HIS DEBUT

The Pro\$ listing may not be a sexy listing to make the show-winning kind with, but it is a listing that provides insight on who the money-makers are. Pattern debuts as not only the highest new Pro\$ bull in the breed but as the #1 Pro\$ bull with over 100 points separating him from #2.

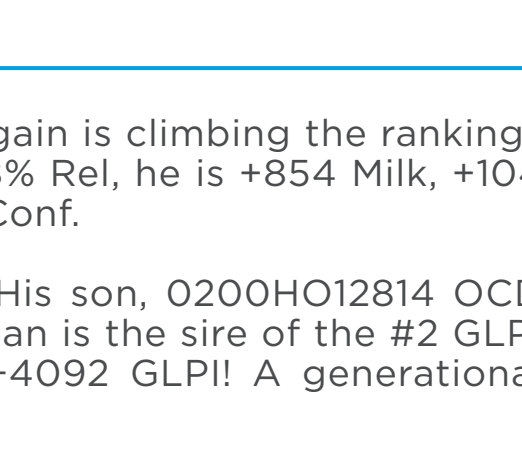
Pattern daughters are milky and they deliver high fat and protein yields from shallow udders and moderate frames. They are mobile and modern with good health traits. Pattern is designated Robot Ready, Fertility First, A2 and is a Calving Ease sire.

0200HO12321

PROGENESIS PATTERN

GLPI AT +3829 | +1425kg MILK | +117kg FAT | +81kg PRO

- Calving Ease, RobotReady™, A2A2 & Fertility First Sire
- #1 PRO\$ Sire: +3211 and #10 GLPI 3829
- +1425 kg M, +117 kg F, +81 kg P
- 106 HL, 105 MR, 104 IMM,
- Pattern son Cookiecutter Hadley ranked even higher with 3957 LPI



PATTERN DAUGHTER GROUP (L TO R) | PELLERAT PATTERN 6642, 5958, 5964 AND 5955

MONTEVERDI – A MULTI-GENERATION POWERHOUSE!

Progenesis Monteverdi (0200HO12123) once again is climbing the rankings in December, now up to #3 LPI at +3885! At 98% Rel, he is +854 Milk, +104 Fat, +108 HL, +104 SCS, +107 MR with solid +8 Conf.

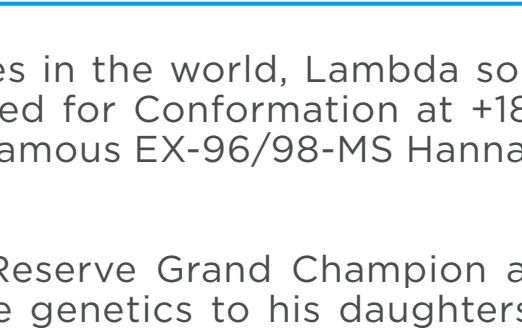
His impact is only growing as a Sire of Sons. His son, 0200HO12814 OCD Milan, is the #1 GLPI Sire at +4137 GLPI **AND** Milan is the sire of the #2 GLPI Sire 0200HO13519 Progenesis Sheamus-P at +4092 GLPI! A generational powerhouse!

0200HO12123

PROGENESIS MONTEVERDI

GLPI AT +3885 | +854kg MILK | +104kg FAT | +61kg PRO

- Calving Ease, RobotReady™ & A2A2 Sire
- #3 GLPI Sire: +3885 GLPI, +854 Milk, +0.57% Fat
- +108 HL, +104 SCS, +104 LP, +105 DCA, +104 MTemp
- +3190 GTPI, +1230 PTAM
- Sire of Sons



DAUGHTER | PROGENESIS MONTEVERDI HOTTIE P VG-88-3YR-CAN

HARRIS – #1 CONFORMATION SIRE

Backed by one of the most famous cow families in the world, Lambda son 0200HO07966 **Mattenhof Harris** leads the breed for Conformation at +18! His dam is a VG-87/89-MS Tattoo and then the famous EX-96/98-MS Hanna-Vray herself!

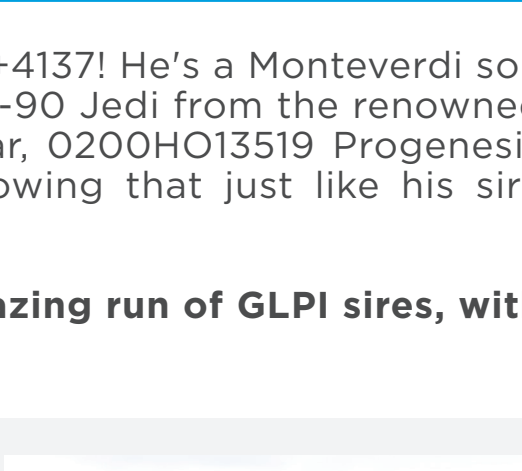
Vray was Champion at Expo Bulle 2022 and Reserve Grand Champion at Swiss Expo 2025. Harris is passing along these genetics to his daughters, who are already leading in the show ring and ranking him at an impressive 94% GP+!

0200HO07966

MATTENHOF HARRIS

GLPI AT +3183 | +18 CONF | +15 MS | +12 F&L

- RobotReady™
- +18 Conf
- +15 MS
- +12 F&L
- 94% GP+!



DAUGHTER | LARIKA HARRIS MAKIA VG-88-3YR-CAN

MILAN – #1 GLPI SIRE

0200HO12814 OCD Milan is the #1 GLPI Sire at +4137! He's a Monteverdi son from VG-86-2YR Perfect x EX-90 Cascade x EX-90 Jedi from the renowned Oakfield Corners Dairy. Milan's son from a Zoar, 0200HO13519 Progenesis Sheamus-P, is the #2 GLPI sire at +4092, showing that just like his sire Monteverdi, Milan is a generational sire!

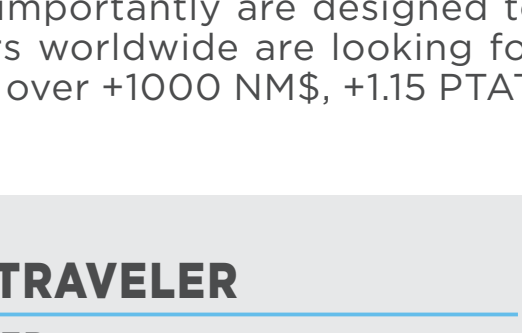
Milan and Sheamus-P led the charge of an amazing run of GLPI sires, with the top 11 bulls calling 200HO home!

0200HO12814

OCD MILAN

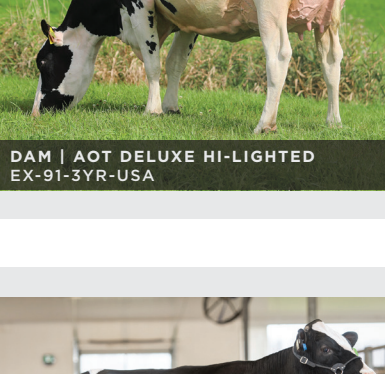
GLPI AT +4137 | +626kg MILK | +107kg FAT

- Calving Ease, RobotReady™, A2A2, GrazingPro™
- +4137 GLPI, +3227 Pro\$
- +626 Milk, +0.70% Fat
- +112 HL, +109 SCS, +106 DF, +105 LP, +109 CA
- +10 Conf, +13 F&L



6 SIRES IN TOP 15 GTPI!

200HO sires topped the World Top 1500 List in December with six sires in the top 15! Many are already sires of sons and importantly are designed to deliver the longevity and profitability producers worldwide are looking for they avg: +1201 PTAM, nearly +200 CFP, +4.1 PL, over +1000 NM\$, +1.15 PTAT, positive CCR and HCR.

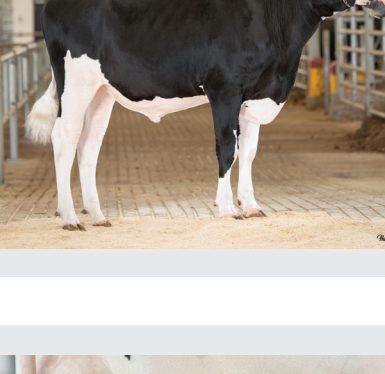


#1 GTPI

PROGENESIS TIMETRAVELER

TORCHLIGHT x TIMESAVER
0200HO13678

+3615 GTPI
+1104 NM\$
+1.30 PTAT

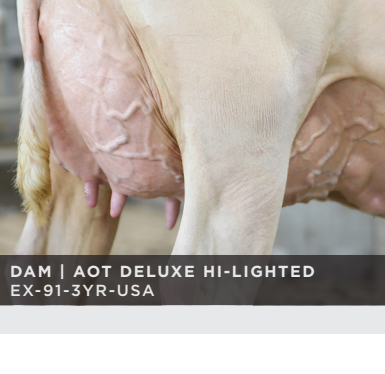


#2 GTPI

BEYOND HI-LEVEL

SHEEPSTER x HI-LIGHTED
0200HO13044

+3612 GTPI
+1121 PTAM
+1126 NM\$



#11 GTPI

PROGENESIS WATCHMAN

SHEEPSTER x GAMEDAY
0200HO13135

+3568 GTPI
+1296 PTAM
+1173 NM\$

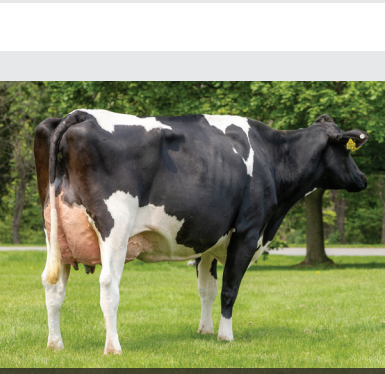


#12 GTPI

BEYOND HI-PACE

SHEEPSTER x DELUXE
0200HO13176

+3566 GTPI
+1254 PTAM

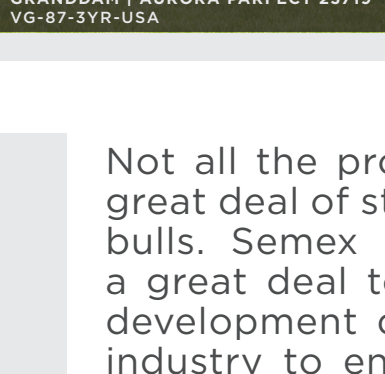


#13 GTPI

PROGENESIS BOOGIEWOOGIE

HI-LEVEL x BOOGIENIGHTS
0200HO13661

+3563 GTPI
+1536 PTAM
+1202 NM\$



#15 GTPI

PROGENESIS TAPAS

FARGO x SHEEPSTER
0200HO13681

+3561 GTPI
+1138 PTAM
+1.41 PTAT

Not all the proof day stories are about individual bulls. There is a great deal of strategy and planning involved in delivering top-ranked bulls. Semex and its domestic partners including WestGen owe a great deal to the passion of its people making the key product development decisions. Balancing the needs for an ever-changing industry to ensure we can compete with the world on producing milk and marketing genetics is something we should never take for granted.

We have long fought above our weight category and the December 2025 proof results demonstrate that very clearly once again.

contact us

To learn more or make an order, contact your local WestGen Genetic Advisor today.

1625 ANGUS CAMPBELL RD
1.800.563.5603
WESTGEN.COM

