

2025 DECEMBER PROTEIN HIGHLIGHTS

Protein Breeds Generate Proof Headlines

Not to be outdone by a big news Proof round for Semex Holstein sires, both Jersey and in particular Ayrshire breeds have plenty to cheer about as well with the December Proof update. The Ayrshire breed has a new breed leader in **Des Mesanges Dalton** with many having seen his daughters already calling him a generational sire.

Meanwhile in the Jersey breed **Lencrest Tobefamous** is expanding on his #1 LPI position with further gains. Young Genomic lists for both breeds see exceptional results for Semex sires as well.

DECEMBER PROOF HIGHLIGHTS

- **TOBEFAMOUS** extends his lead as #1 LPI Jersey Proven sire
- **SUNNY HILL AIR**, bred in BC, is #3 for Type at +15
- 7 of the top 10 LPI young Genomic Jerseys by 7 different sires and 6 different MGS are all at Semex
- **DES MESANGES DALTON** jumps 240 points and 6 points for Type to skyrocket into the #1 LPI and #1 PRO\$ position among proven Ayrshire sires
- **LA CROISEE TORONTO** (AMC) graduates to the #3 LPI and #5 PRO\$ position on the Proven list
- All 10 of the top AY young Genomic LPI leaders carry a 200AY code – and by 7 different sires and 10 different MGS!
- Polled Brown Swiss Bull **GUBELMAN DIONYSUS-P** gains a point for Type and holds the #3 position for Protein yield among the young Genomic sire list

TOBEFAMOUS — #1 LPI SIRE

A2A2 sire 0200JE01320 **Lencrest Tobefamous** remains the #1 LPI sire at +2107, and is #6 Pro\$ at +1802. He's also the #4 Conf sire at +14 Conf, and is +12 MS, +14 F&L with +0.67% Fat, +103 HL, +106 SCS, and +105 MR.



DAUGHTER GROUP (L TO R) | LAHETRIERE TOBEFAMOUS STELLA, LAHETRIERE TOBEFAMOUS SANDRINE

0200JE01320

LENCREST TOBEFAMOUS

GLPI AT +2107 | +1802 PRO\$ | +14 CONF | +12 MS | +14 F&L



- #1 LPI sire at +2107 LPI
- #6 PRO\$ +1802
- #4 CONF sire at +14

His sons remain strong with 0200JE01532 **Allstar Manchester** (Tobefamous x Vivalid) at +2121 GLPI, 0200JE01481 **Dulet Goldorak** (Tobefamous x Jordan) at +2060, and grandson 0200JE1599 **Dulet Simba** is +2024 GLPI and tied for #7 Conf at +19.

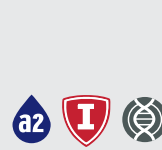


DAM | CABEROY VIVALDI MACARENA VG-87-3YR-CAN

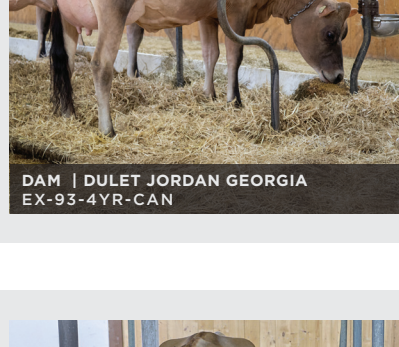
0200JE01532

ALLSTAR MANCHESTER

TOBEFAMOUS x VIVALID



+2121 LPI



DAM | DULET JORDAN GEORGIA EX-87-4YR-CAN

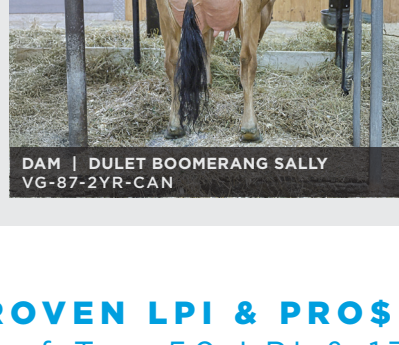
0200JE01481

DULET GOLDORAK

TOBEFAMOUS x JORDAN



+2060 LPI



DAM | DULET BOOMERANG SALLY VG-87-2YR-CAN

0200JE1599

DULET SIMBA

GOLDORAK x BOOMERANG



+2024 LPI
+19 CONF

PROVEN LPI & PRO\$

15 of Top 50 LPI & 13 of Top 50 PRO\$



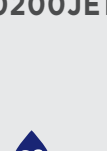
CHIEF DAUGHTER GROUP | L TO R LENCREST CHIEF'S DAISY VG-88, LENCREST CHIEF BELLE EX-90

#2 LPI

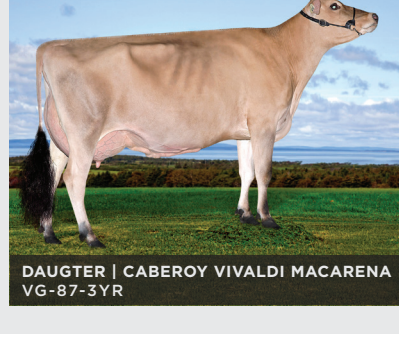
JX RIVER VALLEY CHIEF {6}

CHECKMATE x CHROME

0200JE10034



+2030 LPI
+2367 #1 PRO



DAUGHTER | CABEROY VIVALDI MACARENA VG-87-3YR

#3 LPI

GOLDEN GDK VIVALDI

LIX x Q IMPULS

0200JE07756



+2021 LPI



GRANDDAM | DORLYN JETE-STREAM MIEL SUP-EX-94-7E-CAN 5"

#4 LPI

ST-LO HONEYDEW

JX CHIEF {6} x NOTEPAD

0200JE1266



+2012 LPI
+1940 #4 PRO\$



DAM | JX PROGENESIS BNCROFT DEJA (S) VG-85%-3YR-USA

#8 LPI

PROGENESIS DEVOUR

CHIEF x BANCROFT

0200JE1293



+1912 LPI
+1913 #5 PRO\$



THIRD DAM | JX OOMSDALE CC IATOLA GALEN {3} EX-90%-7YR-USA

#10 LPI

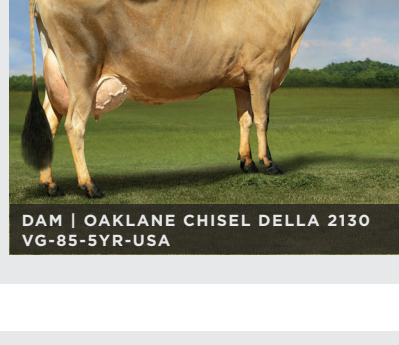
JX AHLEM GODRIC {6}

RESPECT x HARRIS

0200JE1234



+1860 LPI
+2021 #2 PRO\$



DAM | OAKLANE CHISEL DELLA 2130 VG-85-5YR-USA

#1 POLLED PRO\$

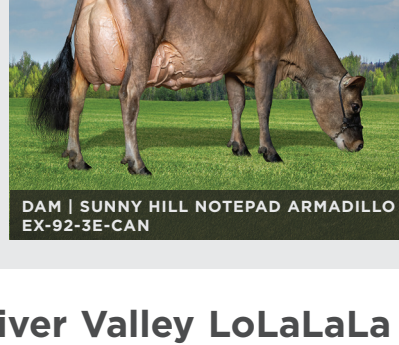
ALL LYNNS DEMOS-P

LISTOWEL x CHISEL

0200JE1178



+1587 PRO\$



DAM | SUNNY HILL NOTEPAD ARMADILLO EX-92-3E-CAN

#3 CONFORMATION

SUNNY HILL AIR

JORDAN x NOTEPAD

0200JE01297



+15 CONF

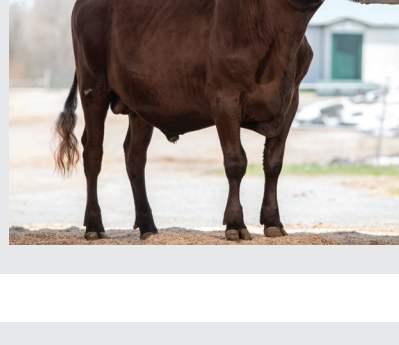
River Valley LoLaLaLa +13 Conf , **Virtuoso**, **Chocochip**, **Video** and **V I P** all at +12. **Amarillo** (+24), **Mr Brown** (+20), **Simba** (+19), **Goldorak** (+18) and **Samba** (+17) all young Genomic Type leaders ensure Canadian Jersey's will continue to blaze the Type trail.

TWO NEWLY PROVEN AYRSHIRE LPI AND PRO\$ LEADERS!

There's a new leader in the Ayrshire breed and his name is Dalton. Staking claim to both top LPI and PRO\$ positions, he is already being spoken of as a generational sires for Ayrshire breeders. With a Laroc bred maternal line and with a sire that is also Laroc breeding, Des Mesanges Dalton is that complete Production and Type leader that moves a breed forward.

Meanwhile stablemate La Croisee Toronto also graduates with impressive Production and moderate Type moving into the #3 LPI position and #5 for Pro\$. Meanwhile two Dalton sons gain significantly from their sire's performance with Merino and Crispers assuming top 5 LPI positions on the young Genomic list, each with the same +14 Conformation rating as their sire.

- #1 LPI and Pro\$ Ayrshire newcomer **Des Mesanges Dalton**
- #3 LPI and #5 Pro\$ in **La Croisee Toronto**
- 10 of top 10 LPI young Genomic sires carry 200AY code from 7 different sires and 10 different MGS!

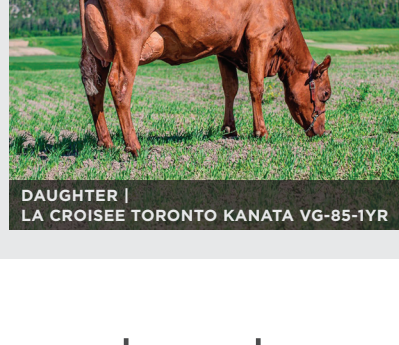


0200AY01106

DES MESANGES DALTON

DIESEL x AMAZING

+3455 LPI
+2174 PRO\$



DAUGHTER | LA CROISEE TORONTO KANATA VG-85-1YR

0200AY01102

LA CROISEE TORONTO

TOKYO x BIGSTAR



+3307 LPI
+1525 PRO\$

contact us

To learn more or make an order, contact your local WestGen Genetic Advisor today.

1625 ANGUS CAMPBELL RD
1.800.563.5603
WESTGEN.COM

